



Documentation

# Amtel Mobile RTU Guide

## Version 3.x

# **OSSI**

**W228 N727 Westmound Dr  
Waukesha WI 53186 USA  
TEL: 262-522-1870  
FAX: 262-522-1872  
Ossi-usa.com**

# **Intelli-Site**

**Security Management Software  
Amtel Mobile RTU Guide**

PC Software RTU Interface Guide  
For Windows 7 SP1, 2008 R2 SP1, XP SP3 & 2003 SP2

Version 3.x  
**Copyright © 1999 – 2012 OSSI, LLC.**

## Copyright

Copyright © 1999-2012 OSSI, LLC. All rights reserved.

Information in this document is subject to change without notice. The software described in this document is furnished under a license agreement or nondisclosure agreement. The software may be used or copied only in accordance with the terms of those agreements. No part of this publication may be reproduced, stored in a retrieval system, or transmitted in any form or any means electronic or mechanical, including photocopying and recording for any purpose other than the purchaser's use without the written permission of OSSI

OSSI  
W228 N727 Westmound Dr  
Waukesha WI 53186  
TEL: 262-522-1870  
FAX: 262-522-1872

## Trademarks

**Intelli-Site**<sup>®</sup> is a registered trademark of OSSI LLC. **Intelli-Site**<sup>®</sup> is registered in U.S. Patent & Trademark Office.

All other registered and unregistered trademarks are the sole property of their respective owners.

# Table of Contents

<b>Copyright</b> .....	3
<b>Trademarks</b> .....	3
<b>Table of Contents</b> .....	3
<b>Section 1 – Introduction</b> .....	5
Overview .....	5
Technical Support Assistance .....	6
OSSI Headquarters.....	<b>Error! Bookmark not defined.</b>
Technical Support .....	<b>Error! Bookmark not defined.</b>
<b>Section 2 – Amtel Mobile RTU Setup</b> .....	7
Adding Amtel Mobile RTU Nodes.....	7
Configuring the Amtel Mobile Node .....	8
Amtel Sub-node Descriptions.....	9
Master History Report Sample .....	10
<b>Section 3 – Amtel Driver Setup</b> .....	11
Adding and Configuring an Amtel Mobile Driver.....	11
<b>Section 4 – Amtel Mobile Hand Held Software</b> . 13	
Installing the Amtel Mobile Program .....	13
Amtel Mobile Program- User Interface .....	13
'File' Menu .....	15
'Sync with PC' Menu.....	16
'Settings' Menu.....	17
'Select COM Ports Dialog' .....	18
Amtel Mobile Program- Usage.....	19
'Get Data' .....	19
'Send Data' .....	20
'Start Scanning'.....	21
Scan Duration .....	21

## **Section 1 – Introduction**

This section describes the following:

- Overview
- Technical Support Assistance

### ***Overview***

The Amtel Mobile RTUs (Receiver/Transmitter Units) are the Intelli-Site software representations of the Amtel Hand-held RFID scanning devices (MP3000 by Domex). This unit will be referred to as the 'hand-held reader' in sections below.

## ***Technical Support Assistance***

### **OSSI Headquarters**

W228 N727 Westmound Dr

Waukesha WI 53186 USA

Tel: 262-522-1870 Fax: 262-522-1872

### **Technical Support**


Technical support is available via Telephone, Fax or Email. Contact OSSI Technical Support 8:00 AM to 5:00 PM Central Standard time. If calling after hours, please leave a detailed voice mail message, and someone will return your call as soon as possible.

E-Mail: [support@ossi-usa.com](mailto:support@ossi-usa.com)

Fax: 262-522-1872 (Attention  
Technical Support)

Local: 262-522-1870

When calling, please be at the computer prepared to provide the following information:

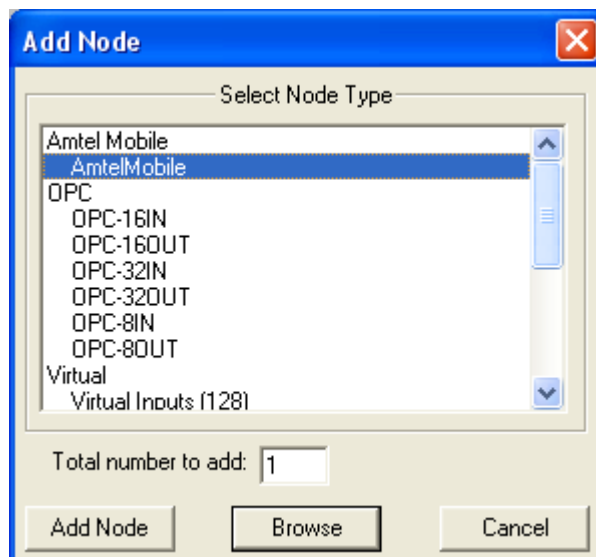
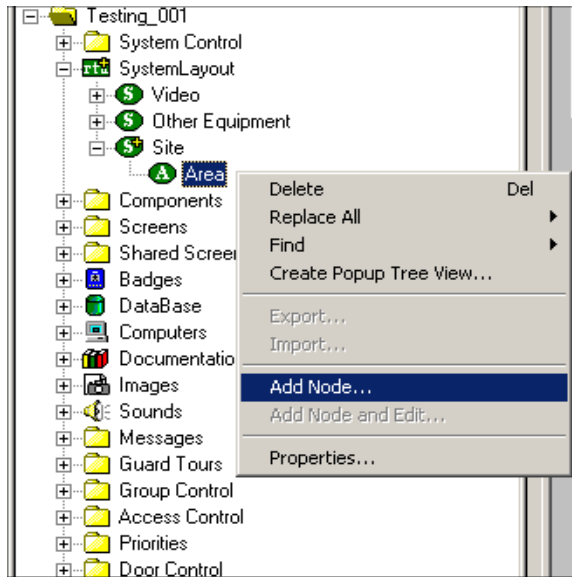
- Product version number, found by selecting the **About**  button from the Intelli-Site Menu Application Bar.
- Product serial number used for registration.
- The type of computer being used including, operating system, processor type, speed, amount of memory, type of display, etc.
- Exact wording of any messages that appear on the screen.
- What was occurring when the problem was detected?
- What steps have been taken to reproduce the problem?

## Section 2 – Amtel Mobile RTU Setup

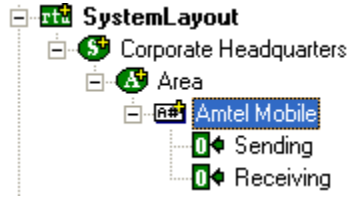
This section discusses the setup of Amtel Mobile RTUs in the project in Graphic Design mode.

### ***Adding Amtel Mobile RTU Nodes***

Amtel Mobile RTU nodes are added by selecting the 'Add Node' menu option:



After selecting 'Add Node', a new Amtel Mobile node will be created:



### ***Configuring the Amtel Mobile Node***

After an Amtel Mobile node has been added, only standard configuration applies. There are no special configuration requirements:

**Amtel Mobile - Area Amtel Mobile**

General Protocol Node Settings | Notes/Comments

Name:  ID:

Access Level:

Domain:

Node Type:  Driver:

Address:

Protocol:

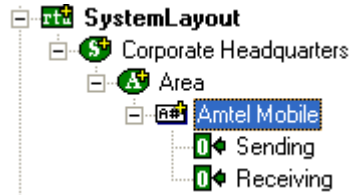
RTU Setup

Virtual Virtual Point:   Retain

Ok Cancel



## Amtel Sub-node Descriptions



**'Sending':** The 'Sending' I/O point is turned on when the hand-held reader has requested an update to it's internal copy of RFID Tag and Location information. The Amtel Mobile driver is sending data to the device to fulfill this request. The point is turned off when the 'Send' process has completed. The name of the hand-held reader that initiated this process is displayed under the 'Server' column.

Alarm Description	Event Status	Priority	Date	Time	Cou...	Card No.	Server
<input checked="" type="checkbox"/> Sending	Point is On	None	06/20/2007	8:31:15 AM	1		Level_1_PDA1

**'Receiving':** The 'Receiving' I/O point is turned on when the hand-held reader is uploading it's RFID scanning results to the system. The scan results send by the hand-held device are recorded in the system database and the logfiles. The history report can be used to view RFID scan results. The point is turned off when the 'Receiving' process has completed. The name of the hand-held reader that initiated this process is displayed under the 'Server' column.

Alarm Description	Event Status	Priority	Date	Time	Cou...	Card No.	Server
<input checked="" type="checkbox"/> Receiving	Point is On	None	06/20/2007	8:35:28 AM	1		Level_1_PDA1

## **Master History Report Sample**

The following is a sample run of the 'Master History Report' displaying RFID Scan Results:

**Master History Report**  
Wednesday, June 20, 2007

On-Line Report

<i>Date</i>	<i>Time</i>	<i>User</i>	<i>Card</i>	<i>Status</i>	<i>Description</i>	<i>User Comments</i>
06/19/2007	11:20:19		Book - 05787640	Invalid Location!	Level_1_PDA1	Location= Norby Officex - 5680515
06/19/2007	11:20:19		TEstingx - 6767675	Missing!	Level_1_PDA1	Location= Norby Officex - 5680515
06/19/2007	11:19:32		Book - 05787640	Normal	Level_1_PDA1	Location= Library - 5681426
06/19/2007	11:19:32		Book - 05787640	Missing!	Level_1_PDA1	Location= Library - 5681426

**'Card' Column:** The Name of the Asset and its RFID Tag are displayed.

**'Status' Column:** 'Normal' indicates the asset was found. 'Missing!' indicates that the asset was not found. 'Invalid Location!' indicates that this asset was found but is not assigned to this location.

**'Description' Column:** The name of the hand-held device used for the RFID scan.

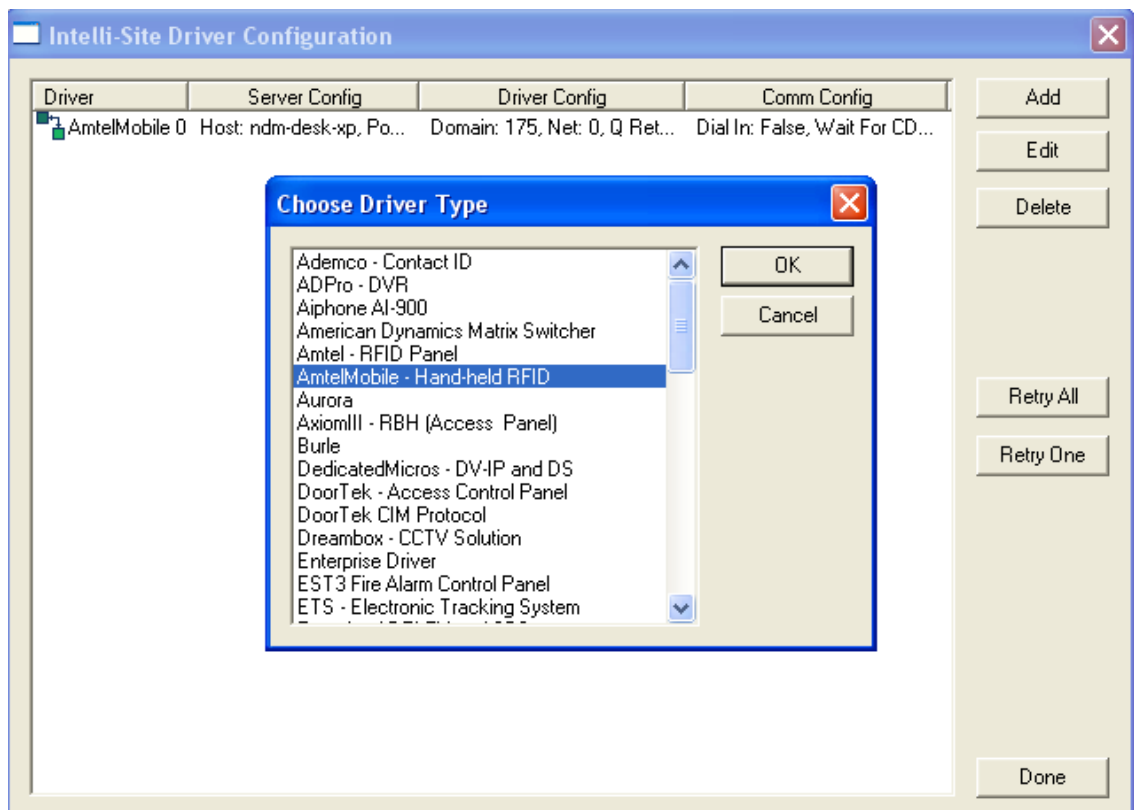
**'User Comments' Column:** The name of the Location and the RFID TagID assigned to represent this Location.

## Section 3 – Amtel Driver Setup

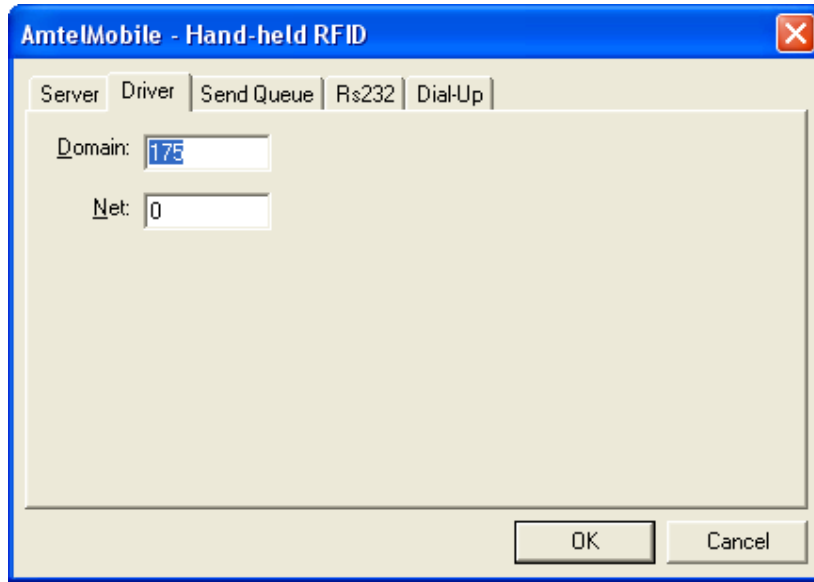
This section discusses the setup of an Amtel driver in the Driver Service.

### ***Adding and Configuring an Amtel Mobile Driver***

Select the 'Add' button in the main Driver Service window. From there, select 'Amtel – Hand-held RFID' from the list of drivers in the 'Choose Driver Type' window:



Setup steps are the same as for any driver; simply modify the 'Domain' and 'Net' values to match the Amtel Mobile RTU in the project:



## Section 4 – Amtel Mobile Hand Held Software

This section discusses the setup of the Amtel Mobile program that runs on the hand-held device.

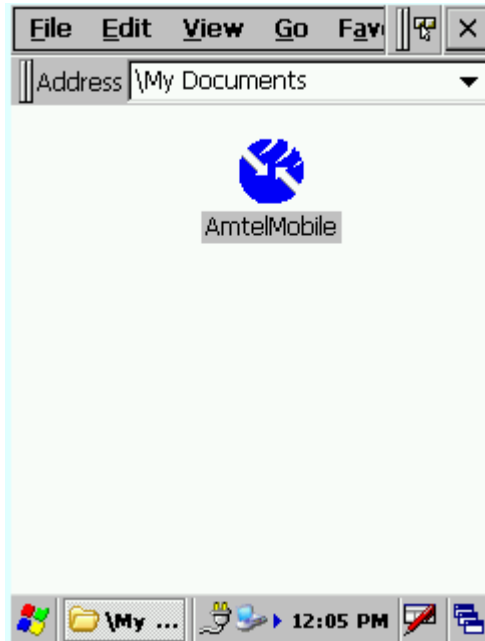
### ***Installing the Amtel Mobile Program***

The program is named 'AmtelMobile.exe', which is located in the install directory, \Intelli-Site, Inc.\Intelli-Site. The program requires no install to be run. The program is ready to be used after it has been copied to the hand-held.

Use any connectivity method available to transfer the program to the 'My Documents' folder on the hand-held device. In other words, transfer can be accomplished using an available network connection/WIFI, Remote Desktop, Microsoft Active Sync© 4.2 or other compatible version with Windows CE.NET 4.2.0.

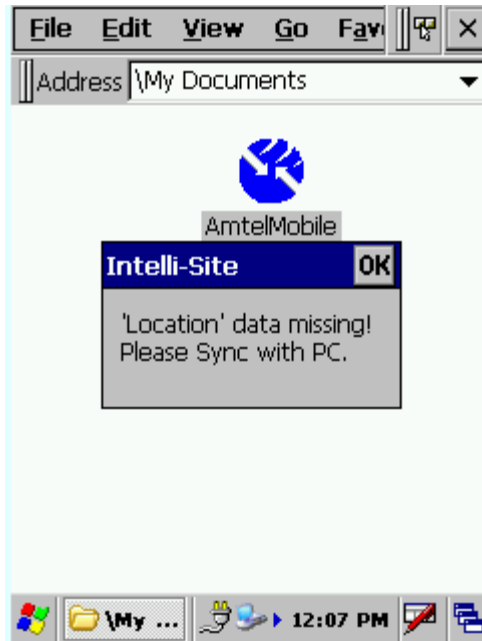
### ***Amtel Mobile Program- User Interface***

Double-click on the 'AmtelMobile' icon to launch the program.

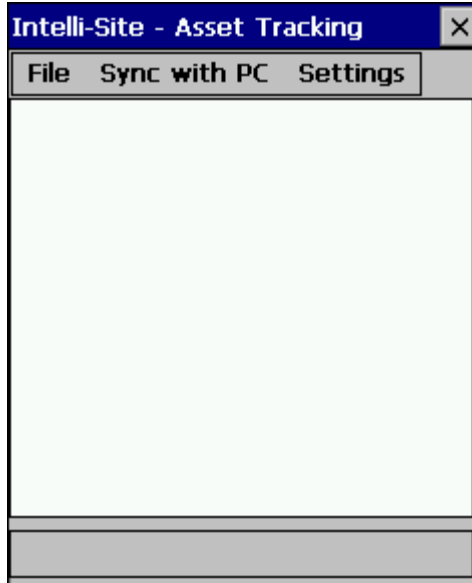


Upon first startup, a message will popup stating:

'Location Data missing! Please Sync with PC'. This message is normal and means that the program has no RFID Information and needs to be synced with the Intelli-Site system:



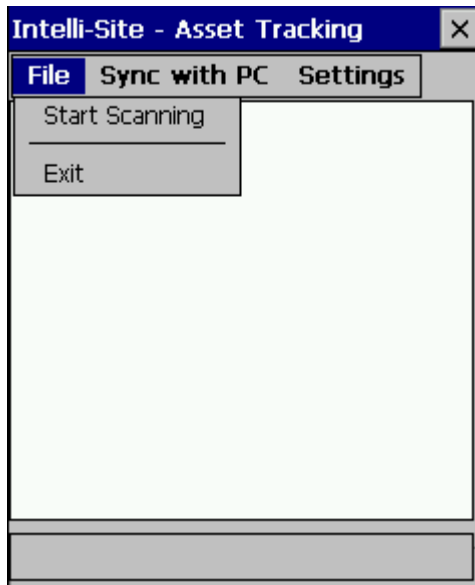
The main window of the program:



### 'File' Menu

**'Start Scanning'**- This initiates an RFID scan. This option will be disabled until the program has received RFID Information from Intelli-Site.

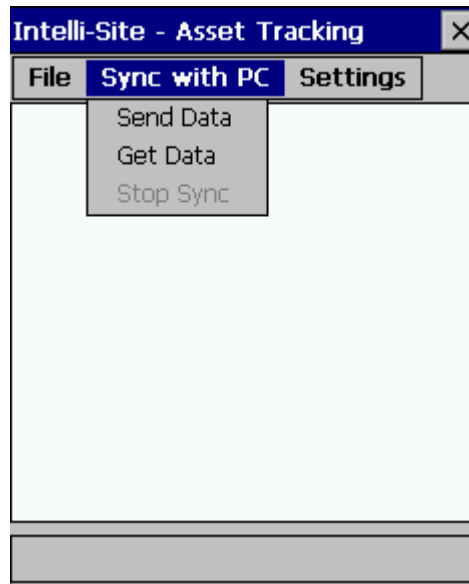
**'Exit'**- Exits the program.



## 'Sync with PC' Menu

**'Send Data'**- This sends all RFID scan results to the Intelli-Site. **'Get Data'**- This retrieves RFID Information from the Intelli-Site.

**'Stop Sync'**- This option is only used a 'Send Data' or 'Get Data' operation fails (e.g. the Intelli-Site system is not responding). For normal operation, this menu option should never be used.

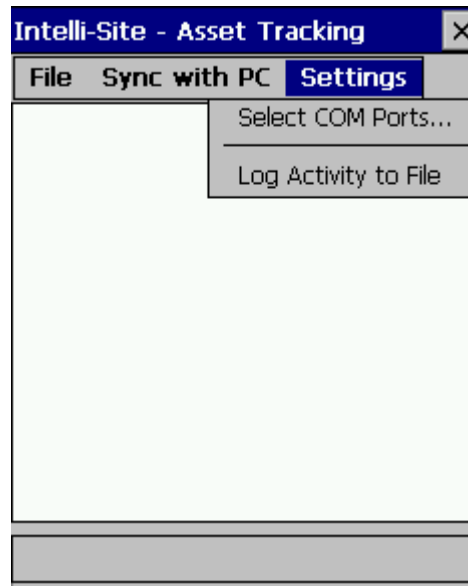




## 'Settings' Menu

**'Select COM Ports'**- This brings up the 'Select COM Ports' dialog.

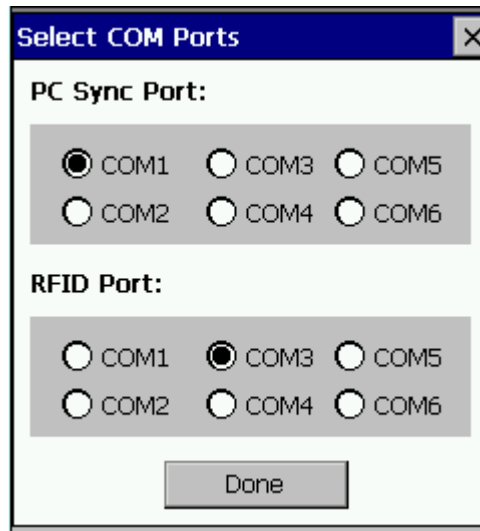
**'Log Activity to File'** – This option is used for troubleshooting purposes and logs activity for investigating software communications problems.



## 'Select COM Ports Dialog'

**PC Sync Port:** The COM port which will be used to perform data transfers to and from Intelli-Site ('Get Data' and 'Send Data').

**RFID Port:** The COM port which will be used for RFID scans.



## **Amtel Mobile Program- Usage**

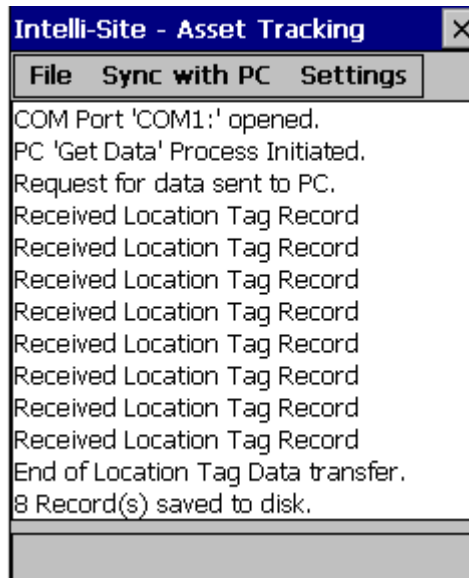
This section shows how to use each of the functions provided in the program.

### **'Get Data'**

For this function, the hand-held device must be connected to a PC running the Intelli-Site Amtel Mobile driver.

During the initial use of this program the user is required to get RFID information which is used by the scanning process. This 'Get Data' function should also be used to periodically update the hand-held device's RFID information. This is needed to ensure that the hand-held device has the latest information.

After selecting the 'Get Data' menu item, the process executes and when complete will list the total number of RFID records received:



## 'Send Data'

For this function, the hand-held device must be connected to a PC running the Intelli-Site Amtel Mobile driver.

Use this function to send RFID scan results to the Intelli-Site system. After selecting the 'Send Data' menu item, the process executes and when complete will list the total number of RFID records received; in the following example only one location's ('Library') data is sent because it was the only Location scanned since the last 'Send Data' was performed:



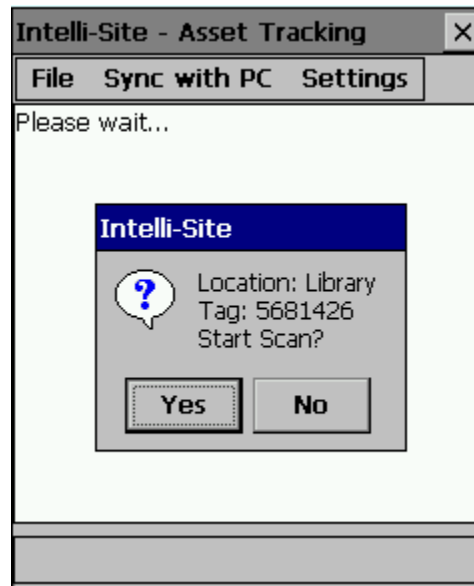
## 'Start Scanning'

### Scan Duration

The amount of time it takes to scan a given Location is defined in the 'Location' table's 'ScanTimeout' field. This value is the number of seconds that the scan process should run before it terminates.

The 'Scanning' process is the process where by Assets are scanned for existence.

After selecting the 'Start Scanning' menu, the operator will be prompted with a Location name (and its associated RFID Tag number). If this is the Location that the operator is currently intending to scan, the 'Yes' button should be selected. If this is not the correct Location, click 'No' until the correct Location appears.



Once the scanning has begun, each RFID Tag (Asset) will be displayed in real-time as it is detected. Also the Location name and the number of Assets assigned to this Location will be listed. There is a progress bar at the bottom of the screen to indicate the amount of time left for the scan process to complete. Again, this time is determined by the 'ScanTimeout' value set for this Location.



Once the Scanning process is complete, the operator will be presented with the following information:

**Total assets found**- This is the total number of Assets that were detected by the scan.

**Tags Found**- This is the total number of Assets found that were assigned to the Location that was just scanned.

**MISSING TAG**- For each asset not found, one of these entries will be listed along with the RFID tag number for the Asset.

**Missing Total**- The total number of missing tags.

**EXTRA (INVALID) Tags Found**- This is the total number of assets found that are not assigned to this Location.



Results of Scanning Process:

