

Documentation

# Dedicated Micros Video RTU Guide Version 3.x

# **OSSI**

**W228 N727 Westmound Dr  
Waukesha WI 53186 USA  
TEL: 262-522-1870  
FAX: 262-522-1872  
Ossi-usa.com**

# **Intelli-Site**

**Security Management Software  
Dedicated Micros Video RTU Guide**

PC Software RTU Interface Guide  
For Windows 7 SP1, 2008 R2 SP1, XP SP3 & 2003 SP2

Version 3.x  
**Copyright © 1999 – 2012 OSSI, LLC.**

## Copyright

Copyright © 1999-2012 OSSI, LLC. All rights reserved.

Information in this document is subject to change without notice. The software described in this document is furnished under a license agreement or nondisclosure agreement. The software may be used or copied only in accordance with the terms of those agreements. No part of this publication may be reproduced, stored in a retrieval system, or transmitted in any form or any means electronic or mechanical, including photocopying and recording for any purpose other than the purchaser's use without the written permission of OSSI

OSSI  
W228 N727 Westmound Dr  
Waukesha WI 53186  
TEL: 262-522-1870  
FAX: 262-522-1872

## Trademarks

**Intelli-Site®** is a registered trademark of OSSI LLC. **Intelli-Site®** is registered in U.S. Patent & Trademark Office.

All other registered and unregistered trademarks are the sole property of their respective owners.

# Table of Contents

<b>Copyright.....</b>	<b>3</b>
<b>Trademarks.....</b>	<b>3</b>
<b>Table of Contents .....</b>	<b>3</b>
<b>Section 1 – Introduction.....</b>	<b>5</b>
Overview .....	5
Technical Support Assistance .....	6
OSSI Headquarters.....	<b>Error! Bookmark not defined.</b>
Technical Support .....	<b>Error! Bookmark not defined.</b>
<b>Section 2 – Important Installation Note.....</b>	<b>7</b>
<b>Section 3 - Dedicated Micros DVR Setup</b>	
<b>(Design Mode) .....</b>	<b>8</b>
Adding DVR Nodes .....	8
Configuring the DVR Node.....	9
Programming Examples.....	12
<b>Section 4 - DM DVR Mode.....</b>	<b>15</b>
Using the DVR Mode .....	15
Quick Start.....	15
Multi View Mode.....	17
Main Video Controls.....	17
Tab View Controls .....	20
<b>Section 5 - DM DVR Driver Setup .....</b>	<b>26</b>

## **Section 1 – Introduction**

This section describes the following:

- Overview
- Technical Support Assistance

### ***Overview***

The Dedicated Micros Video RTUs (Receiver/Transmitter Units) are the Intelli-Site software representations of the Dedicated Micros Digital Video Recorders (DVR). For purposes of this document, the term RTU is synonymous with a Dedicated Micros DVR and the term DM with Dedicated Micros.

## ***Technical Support Assistance***

### **OSSI Headquarters**

W228 N727 Westmound Dr.

Waukesha WI 53186 USA

Tel: 262-522-1870      Fax: 262-522-1872

### **Technical Support**


Technical support is available via Telephone, Fax or Email. Contact OSSI Technical Support 8:00 AM to 5:00 PM Central Standard time. If calling after hours, please leave a detailed voice mail message, and someone will return your call as soon as possible.

E-Mail: [support@ossi-usa.com](mailto:support@ossi-usa.com)

Fax: 262-522-1872 (Attention Technical Support)

Local: 262-522-1870

When calling, please be at the computer prepared to provide the following information:

- Product version number, found by selecting the **About**  button from the Intelli-Site Menu Application Bar.
- Product serial number used for registration.
- The type of computer being used including, operating system, processor type, speed, amount of memory, type of display, etc.
- Exact wording of any messages that appear on the screen.
- What was occurring when the problem was detected?
- What steps have been taken to reproduce the problem?

## Section 2 – Important Installation Note

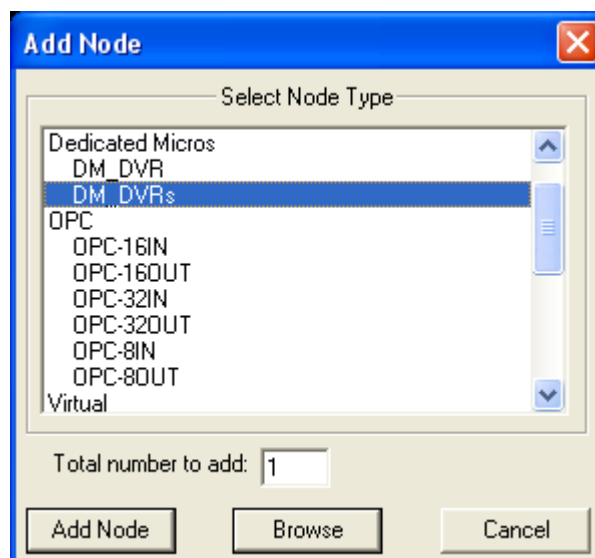
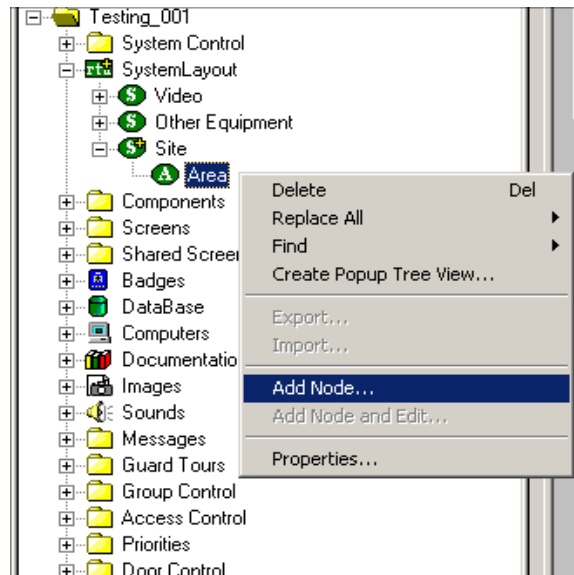
The target machine must have the Sun Java Runtime Environment (JRE) 1.5 or later. The JRE can be downloaded for free from <http://java.com/en/download/index.jsp>.

## Section 3 - Dedicated Micros DVR Setup (Design Mode)

This section discusses the setup of DM DVRs in the project in Graphic Design mode.

### ***Adding DVR Nodes***

DM DVR nodes reside under a parent 'DVRs' node. This parent node must be added first (see figures below):





As displayed, the first step is to add a 'DM\_DVRs' node from the list in the 'Add Node' dialog. Once this has been added, the user can begin adding individual DVR nodes:

Right mouse click on the 'DM DVRs' node and select 'Add Node', at which point a new DVR node will be created:



## ***Configuring the DVR Node***

After a DVR node has been added under the 'DM DVRs' node, it needs to be configured. This is accomplished by selecting the properties of the DVR node:

The screenshot shows a software window titled "Dallas - DM DVRs Dallas". It has two tabs: "General Protocol Node Settings" and "Connection Settings", with the latter being selected. The "Connection Settings" tab contains the following fields and options:

- Server IP Address:** A text box containing "192 . 168 . 12 . 239".
- User ID:** A text box containing "dm".
- Password:** A text box containing "xxxx".
- Media Format:** A dropdown menu with "MJPEG" selected.
- Display Details:** A checkbox labeled "Display Details ( Camera Title and Date/Time )" which is checked.

At the bottom right of the window are "Ok" and "Cancel" buttons.

Select the 'Connection Settings' tab. Fill out the following required information:

**'Server IP Address:'** This is the IP address of the DVR.

**'User ID' / 'Password':** Enter valid credentials that allow for access to the DVR.

**'Media Format:'** Select the appropriate format for the target DVR. Select MPEG4 only if the DVR is fully NetVu compatible. All DVIP and newer DS2 and TransVu units are fully NetVu compatible. If in doubt, use the MJPEG value.

**'Display Details':** When selected, each video window will display the camera title at the top and the date/time at the bottom.

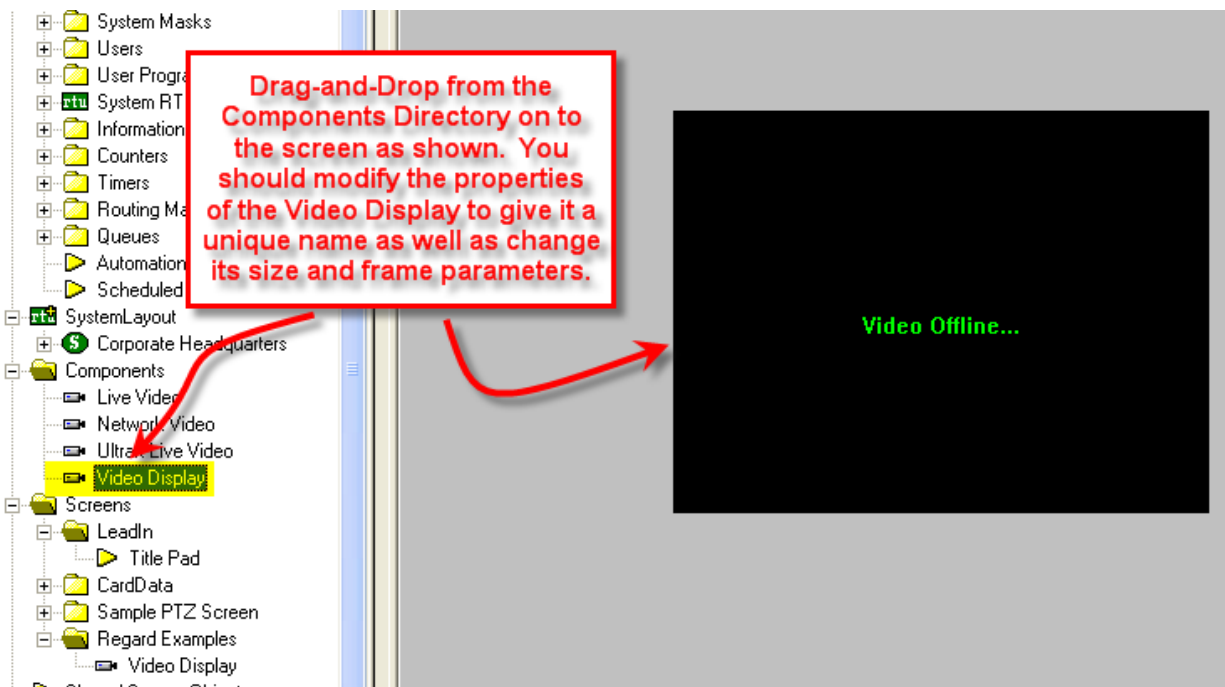


## Programming Examples

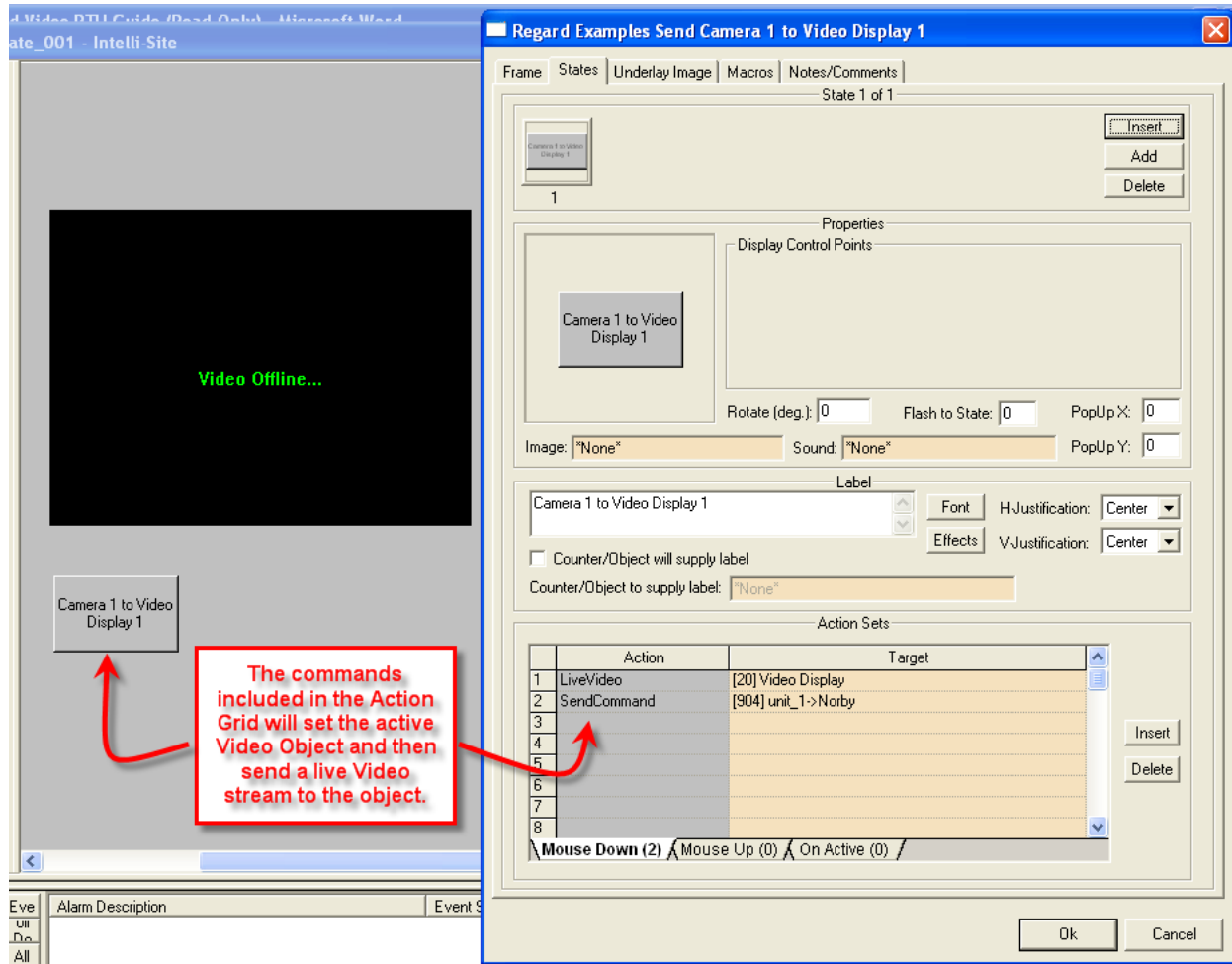
The following section describes some basic programming for DM RTU functionality in Run Mode:

The first step in adding DM RTU functionality is to create a Video Display Object. The Video Display Object is the display target for any Dedicated Micros Video Channel (Camera). You can add as many Video Display Objects to a Screen as you need.

1. In Design Mode Drag-and-Drop a Video Display from the Components Directory on to the Screen.



2. Create a control Screen Object (a button or icon) that directs a video channel (Camera) to the Video Display. The Action for any DM command is always SendCommand, and the Target may be any Subnode in the DM RTU. In the following example we are sending live video stream (Camera) to the Video Display Object that we created in the previous step.



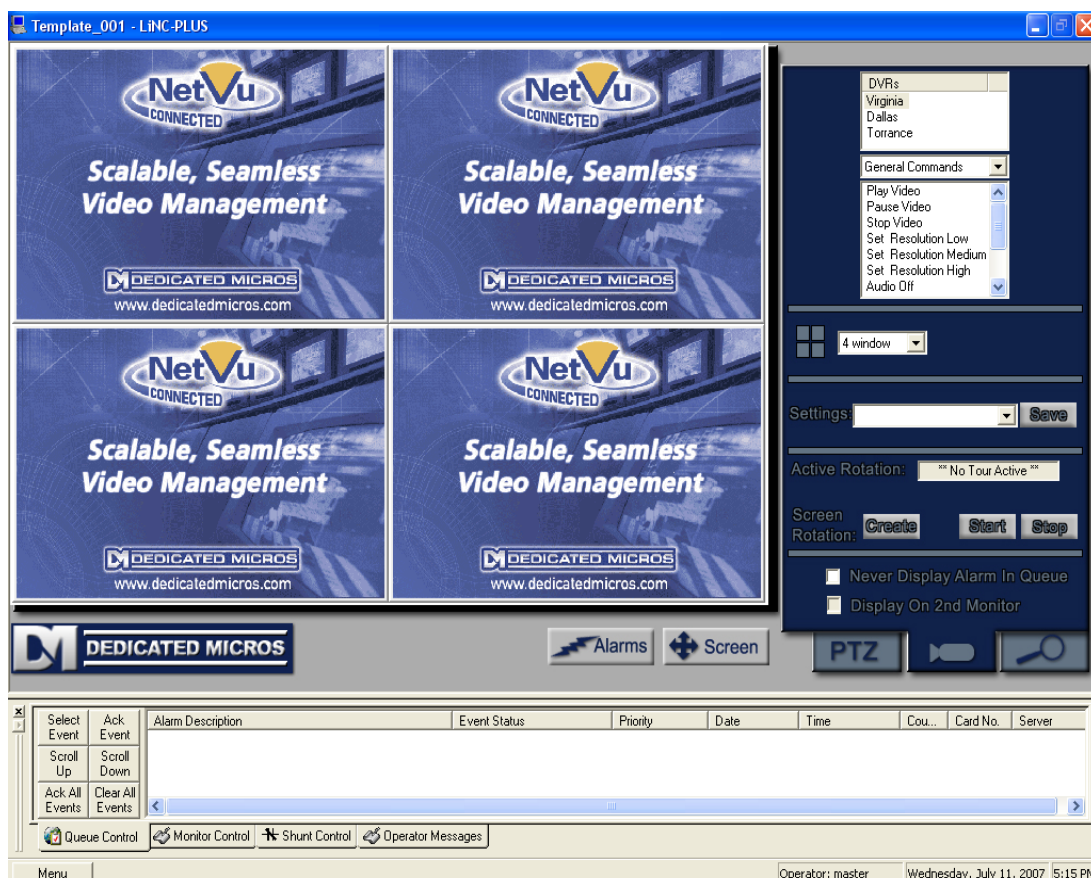
- In Run Mode select (mouse-down) the button. The resultant display should be live streaming video to the Video Display Object:




4. Additional video-related commands can be set up as SendCommand action targets, such as:
  - a. Play Video – Restarts a paused video stream.
  - b. Pause Video – Temporarily pauses a video stream.
  - c. Stop Video – Stops the current video stream.
  - d. Set Resolution Low/Medium/High – Sets the resolution to the lowest value. The usual trade-off between bandwidth and quality applies.
  - e. Audio Off – Disables audio for the current camera. When multiple cameras are displayed, the last camera feed started is the one who's audio will be affected.
  - f. Audio Channel 1 and 2 – Enables each audio channel.
  - g. Toggle Talkback – Enables/Disables the the DVR's talkback microphone.
  - h. Reset EXE - Kills the running instance of the DMCom2Java.exe application; which is the background process controlling the video. Note that this method will clear all connections to any running instance of the control in any application. It should be used only when connections attempts for video continually fail.
5. Relays can be set on and off by setting up a button whose Action is SendCommand against the Output Node's On or Off subnodes.
6. Preset Nodes, when used as targets of the SendCommand action, perform the action of going to that preset.

## Section 4 - DM DVR Mode


This section discusses the use of the DM DVR Multi View Mode.

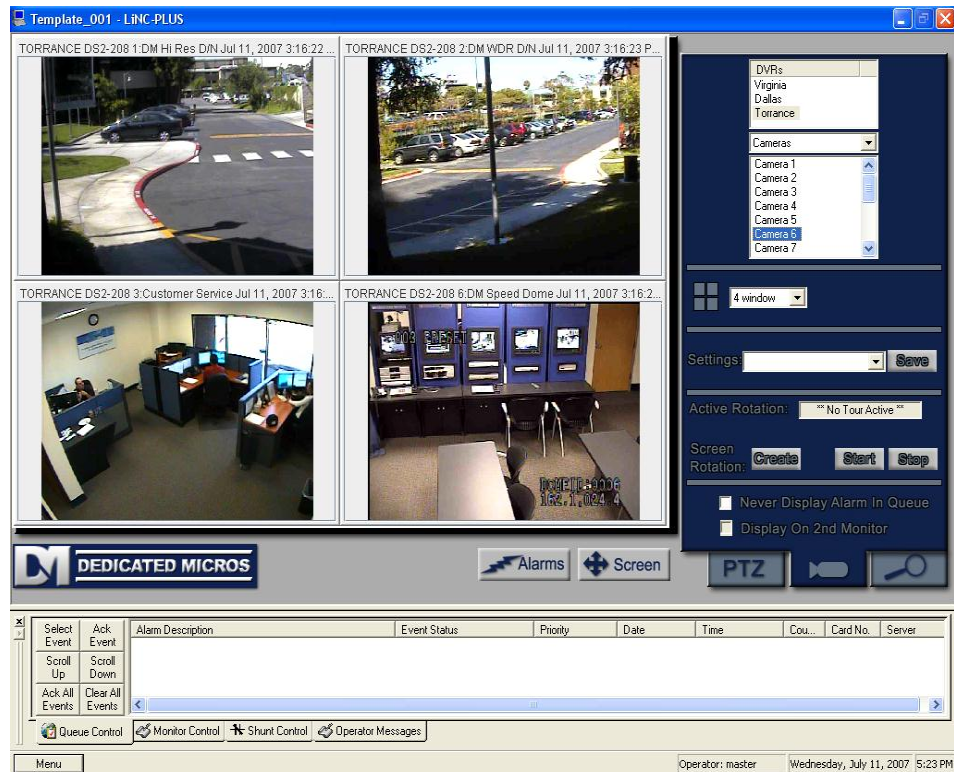


### Using the DVR Mode

- Click on the  icon on the Application Menu bar.

### Quick Start

- On tab 1 , double click on the DVR your choice. This should start a 16/10-channel view and begin connection of all available cameras.





## Multi View Mode

The main window of multi view consists of a viewing area; three control buttons and a three-tab configuration and control area.

### Main Video Controls



**Full Screen:** This feature will expand the multi channel view to full screen. Just hit 'Escape' key to return.



**Alarms:** This feature brings up a dialog that can be used to search for alarm events that associated with Dedicated Micros cameras.

**Alarm Events**

Date Range Start: Jul / 9 / 2007 Date Range End: Jul / 11 / 2007

Date	Time	Alarm/Event
07/11/2007	15:24:07	System RTU - Torrance 1
07/11/2007	15:20:07	System RTU - Dallas 1
07/11/2007	15:20:07	System RTU - Virginia 3
07/11/2007	10:51:35	System RTU - Torrance 1
07/11/2007	09:49:00	System RTU - Dallas 1
07/11/2007	07:51:35	System RTU - Torrance 1
07/10/2007	10:51:35	System RTU - Torrance 1

To associate a DM camera with an alarm, drag and drop a DM Camera into the 'Camera or System Monitor' field on the properties of an I/O point:

**System RTU - Virtual Points V-Point 1**

Property Page | Operation | Actions | Commands

**Operations**

☒ RTU Will Transmit  
☒ Add to Queue on High  
☐ Add to Queue on Low  
☐ Auto Clear on Normal  
☐ Clear only on Normal  
☐ Acknowledge Required  
☐ Latch Point  
☐ Report Required  
☒ Write to Log File  
☐ Print as Occurs  
☐ Print Special

**General**

Routing Level: All

Pulse Delay: 1000  
Value in milliseconds 1000 = 1 Sec.

**Action on Alarm**

**Camera Control**

Camera or System Monitor: [311] DM DVR->Camera 2

☒ Display Video    ☒ Stop on Normal

**Video Recording**

☒ Post-Alarm    Duration (in seconds): 5  
☒ Pre-Alarm    Duration (in seconds): 5

**Alarm Screen**

\*None\*

**Acknowledge Status Point**

\*None\*

**Silence Alarm Sound Point**

\*None\*

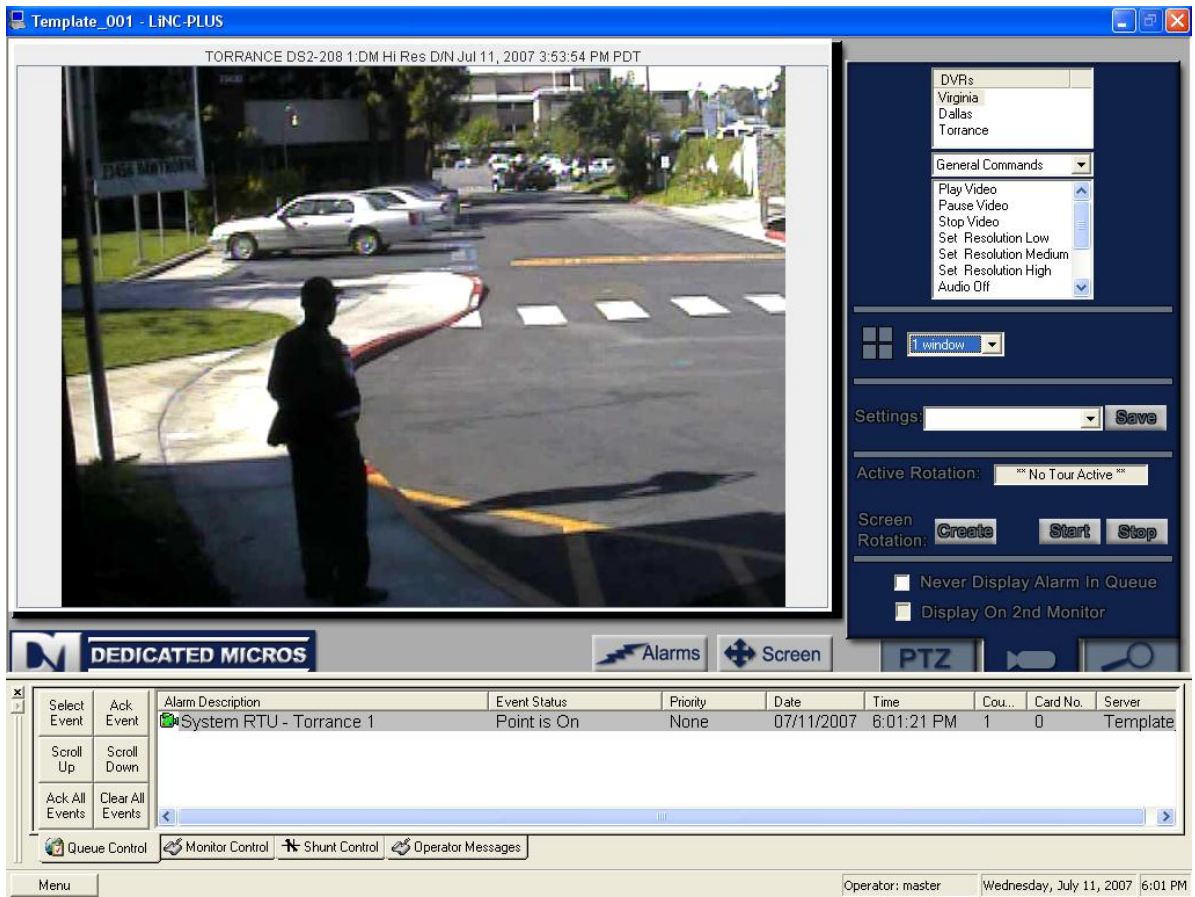
**Actions on Queue "Action" Button**

	Action	Target
1		
2		
3		
4		
5		

Insert  
Delete

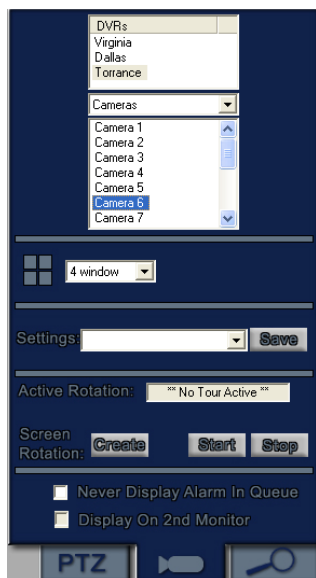
Ok Cancel

When an I/O point that has been associated with DM camera is displayed in the alarm queue, it will have a camera icon. Double-clicking on the alarm will switch the current view to the DM Video Mode and playback the video for that alarm:



## Tab View Controls

### Tab 1 (Connections)



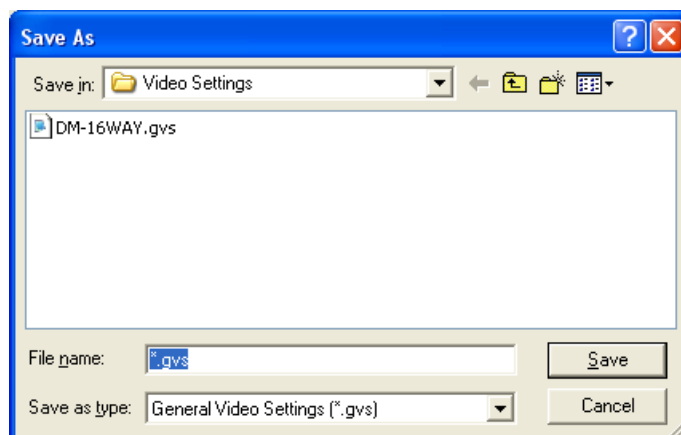
- **DVRs:** This is a list of all the DVRs defined in the system. You can click or drag and drop them to start a tour.

**Commands and Controls:** This drop down menu contains DVR commands and camera controls. These options apply to the DVR currently selected in the DVRs list.

The 'Active Tour' pull down box has many choices for active tours. Ranging from 1-16 channels. The tours displayed in the controls can be from any source and saved as a setting.

**Settings:** A user can save configuration settings. The file will contain the cameras and their location in the view.

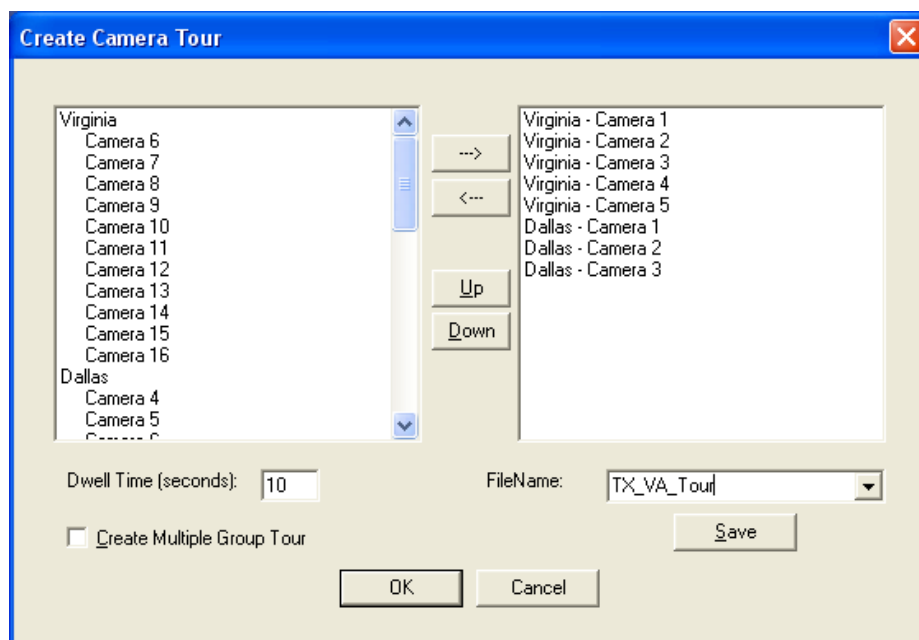
- **Save:** Press here to bring up the location to save your settings.



- **Settings:** This pull down contains all previously saved settings files.

- **Active Tour:** This will display the current active tour. If no tour is active the following text will appear, '\*\* No Tour Active \*\*'. While a tour is active all functionality is disabled except the 'Stop' button.

- **Create:** This brings up the 'Create Camera Tour' dialog which allows the user to create and edit camera tours:



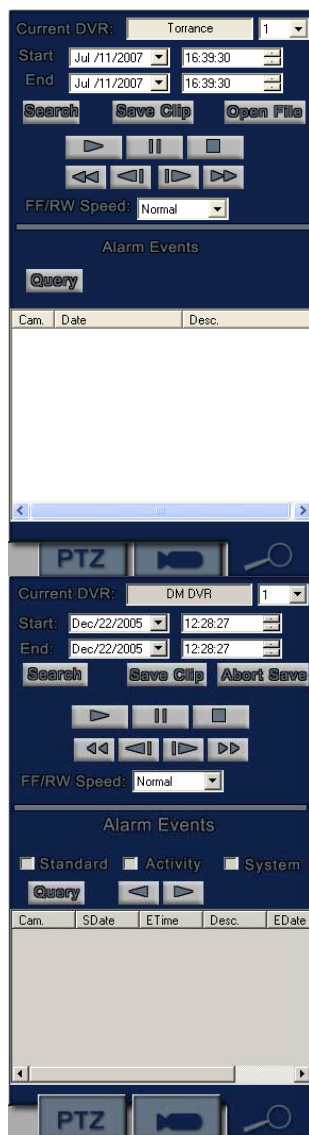
- **Start:** This will display a dialog that allows the user to select a camera tour to begin. Also, from this dialog, the user can delete tours and launch the 'Create Camera Tour' dialog.
- **Stop:** Selecting this button stops the active camera tour.

### 'Create Camera Tour' Dialog Box:

- In the left half of the screen a listing of the available cameras for a tour is displayed.
- In the right half of the screen is a listing of the cameras already added to the tour.
- Cameras are added and removed from tours by using the two arrow buttons between these windows. The arrow pointing right adds the highlighted camera and the arrow pointing left removes the highlighted camera from the tour.

- The Up and Down buttons are used by highlighting on the camera already added to the tour (listed on the right) and hitting either the up button to move the camera up one in the listing or the down button to move the camera down one in the listing.
- Dwell Time: The number of seconds between camera tour rotations (i.e. between switching cameras in a tour ).
- Create Multiple Group Tour: When selected, the left hand box will display all saved camera tours. The user can move tours to the right hand side to include them in the multi-tour. When a multi-tour is run, the tour will rotate between the cameras in each of its tours after the specified Dwell time.
- **Never Display Alarm Queue:** When selected, any alarm events that are received by the Workstation will not cause the alarm queue to be displayed (while the user is in this view).
- **Display on 2<sup>nd</sup> Monitor:** When selected, this view is automatically displayed on a 2<sup>nd</sup> monitor (if available). This view will always be displayed on a 2<sup>nd</sup> monitor until the option is unselected.

## Tab 2 (Playback/Copy Options)



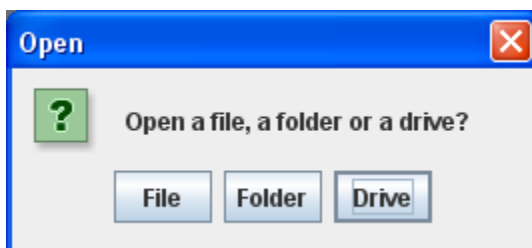
• **Current DVR:** Lists the name of the DVR that is currently active.

• **Start:** Enter the Start Date and Time for a Search or Query.

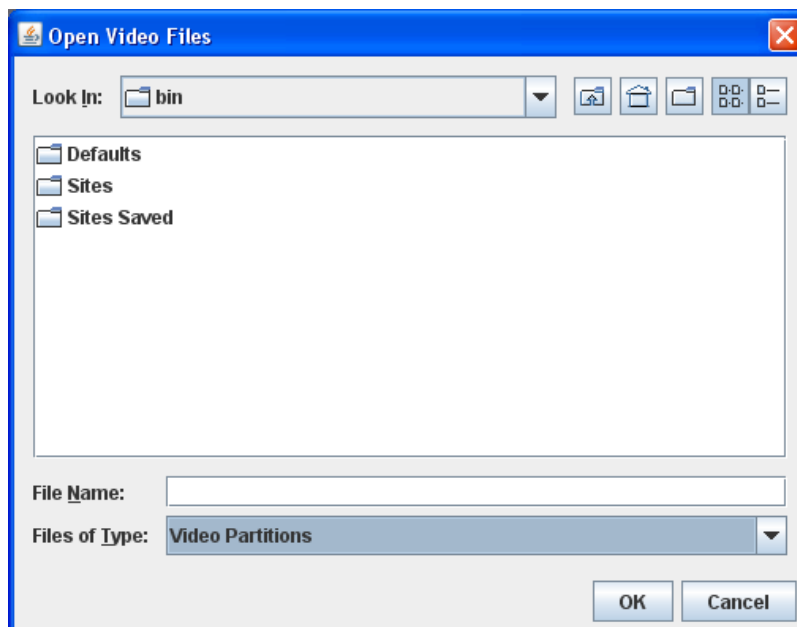
• **End:** Enter the End Date and Time for a Query.

• **Search:** Select this button to perform a Playback using the selected Start date/time selections. The video will be displayed in the selected video control on the left.

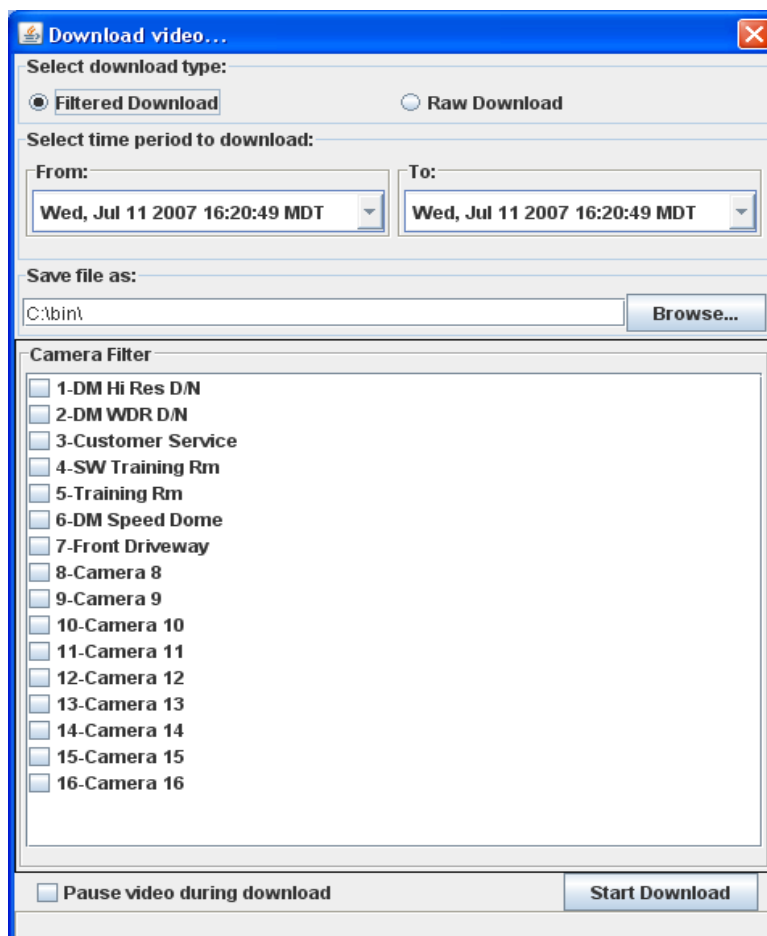
• **Open File:** Shows a file system dialog for choosing files, folders or entire drives containing VID or PAR files for playback in the control:



After making your selection, the 'Open' dialog appears:



- **Save Clip:** Displays a download dialog allowing the application user to select a time range and set of cameras to download to the local hard drive:



- **Playback buttons:** In order from left to right, top to bottom: Play, Pause, Stop, Rewind, Step Back 1 Frame, Step Forward 1 Frame and Fast Forward.
- **FF/RW Speed (in sec):** Values range from normal to x64.
- **Query:** Perform a event search based on the Start Date/Time and End Date/Time. A maximum of 1000 results are returned. The results are displayed in the Query Results list.
- **Query Results list:** Double-click on an entry to playback the video associated with the event.





### Tab 3 (PTZ )

PTZ

• **Pan/Tilt Controls:** The arrow controls indicate in which direction the camera will move when selected. The 'Stop' button will halt all PTZ, Focus, Zoom and Iris operations.

• **Auto Pan Toggle Operation:** 

• **+/- Controls:** These increase/decrease the speed of any action on this tab. The speed varies from 1 to 15, with the default speed being 8.

• **Auto Patrol Toggle Operation:** 

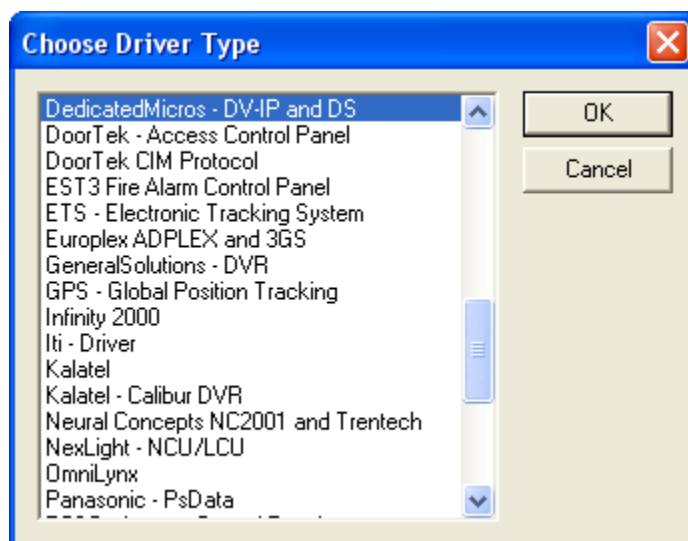
• **Zoom Out/In, Focus Near/Far, Iris Open/Close:** All of these actions are continuous until the user selects the 'Stop' button above.

• **Presets:** Presets displayed in the drop down list represent the presets from the Current DVR. Options include being able to 'Goto', 'Set' and 'Clear' the selected preset.

## Section 5 - DM DVR Driver Setup

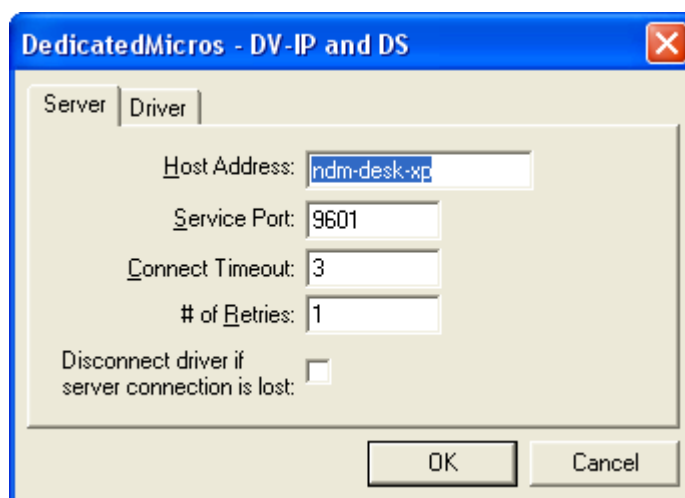
This section discusses the setup of the DM DVR Driver.

Open the Driver Service window and select the Add button:



Select the 'DedicatedMicros' item and select OK.

There are no extra configuration fields for the DM DVR. As with any driver, fill out the Host Address, Domain and other fields as needed.



One DM DVR driver needs to be added for each 'DM DVRs' node in the project tree. This means one driver for each top-level 'DM DVRs' node, NOT for each DVR node.