

**Documentation**

# **Hikvision RTU Guide**

Version 3.x

# Intelli-Site

## Security Management Software

### Hikvision RTU Guide

PC Software RTU Interface Guide  
For Windows 7 SP1, 2008 R2 SP1, XP SP3 & 2003 SP2

Version 3.x  
**Copyright © 1999 – 2012 OSSI, LLC.**

## Copyright

Copyright © 1999-2012 OSSI, LLC. All rights reserved.

Information in this document is subject to change without notice. The software described in this document is furnished under a license agreement or nondisclosure agreement. The software may be used or copied only in accordance with the terms of those agreements. No part of this publication may be reproduced, stored in a retrieval system, or transmitted in any form or any means electronic or mechanical, including photocopying and recording for any purpose other than the purchaser's use without the written permission of OSSI

OSSI  
W228 N727 Westmound Dr  
Waukesha WI 53186  
TEL: 262-522-1870  
FAX: 262-522-1872

## Trademarks

**Intelli-Site**<sup>®</sup> is a registered trademark of OSSI LLC. **Intelli-Site**<sup>®</sup> is registered in U.S. Patent & Trademark Office.

All other registered and unregistered trademarks are the sole property of their respective owners.

# Table of Contents

<b>Copyright .....</b>	<b>3</b>
<b>Trademarks .....</b>	<b>3</b>
<b>Table of Contents .....</b>	<b>4</b>
<b>Section 1 – Introduction .....</b>	<b>5</b>
Overview.....	5
Technical Support Assistance .....	6
OSSI Headquarters .....	6
Technical Support .....	6
<b>Section 2 - Important Installation and Setup Notes .....</b>	<b>7</b>
<b>Section 3 - Hikvision DVR Setup (Design Mode) .....</b>	<b>8</b>
Adding DVR Nodes .....	8
Configuring the DVR Node .....	9
Programming Examples .....	11

## **Section 1 – Introduction**

This section describes the following:

- Overview
- Technical Support Assistance

### ***Overview***

The Hikvision RTUs (Receiver/Transmitter Units) are the Intelli-Site software representations of the Hikvision Digital Video Recorders (DVR). For purposes of this document, the term RTU is synonymous with a Hikvision DVR.

## ***Technical Support Assistance***

### **OSSI Headquarters**

W228 N727 Westmound Dr

Waukesha WI 53186 USA

Tel: 262-522-1870 Fax: 262-522-1872

### **Technical Support**


Technical support is available via Telephone, Fax or Email. Contact OSSI Technical Support 8:00 AM to 5:00 PM Central Standard time. If calling after hours, please leave a detailed voice mail message, and someone will return your call as soon as possible.

E-Mail: [support@ossi-usa.com](mailto:support@ossi-usa.com)

Fax: 262-522-1872 (Attention Technical Support)

Local: 262-522-1870

When calling, please be at the computer prepared to provide the following information:

- Product version number, found by selecting the **About**  button from the Intelli-Site Menu Application Bar.
- Product serial number used for registration.
- The type of computer being used including, operating system, processor type, speed, amount of memory, type of display, etc.
- Exact wording of any messages that appear on the screen.
- What was occurring when the problem was detected?
- What steps have been taken to reproduce the problem?

## **Section 2 - Important Installation and Setup Notes**

---

**Prior to use of the Hikvision DVR features, the Hikvision driver component must be installed with the Intelli-Site installer.**

---

---

**This Hikvision driver has been developed with and tested on only Hikvision DS-8116HCI-ST hardware, but other types of Hikvision NVR/DVR hardware MAY function with this driver.**

**Currently only analog video channels are supported, so IP-only Hikvision devices will not function with this driver.**

**Other Hikvision hardware:**

- **DS-90xx/76xx series hybrid DVR/NVR (analog only)**
- **DS-91xx/81xx/80xx series DVR**
- **DS-73xx/72xx/71xx/70xx series DVR**
- **DS-60xx/61xx series Digital Video Server/Encoder**
- **DS-78xx/88xx series**
- **ATM DVRs and mobile DVRs**

**Other Hikvision hardware likely to NOT WORK:**

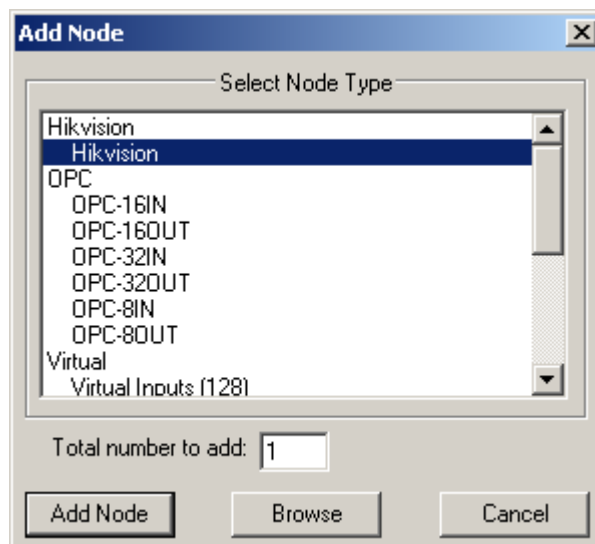
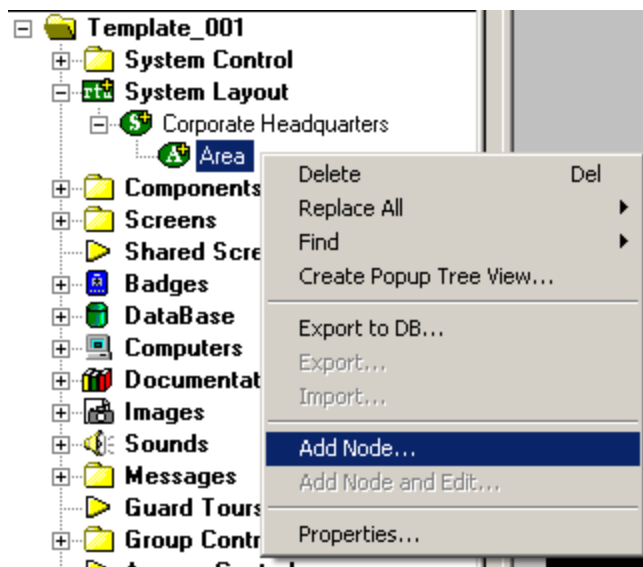
- **DS-96xx/95xx series NVRs**
-

## Section 3 - Hikvision DVR Setup (Design Mode)

This section discusses the setup of Hikvision DVRs in the project in Graphic Design mode.

### ***Adding DVR Nodes***

Hikvision DVR nodes reside under a parent Area node. This Hikvision DVR node must be added first (see figures below):



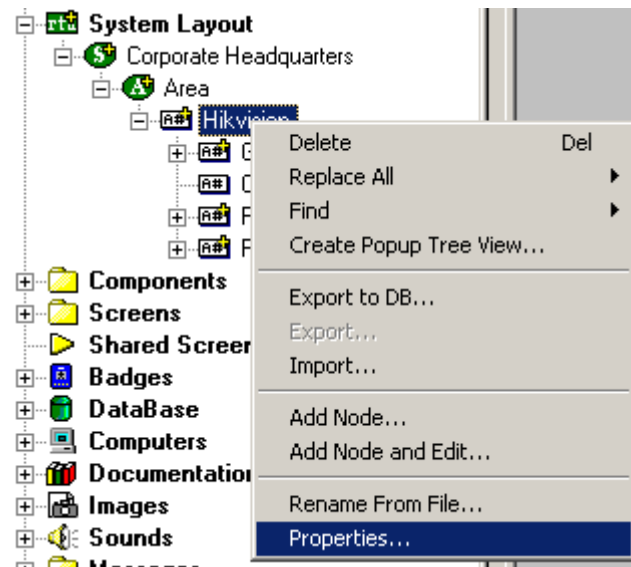


As displayed, the first step is to add a 'Hikvision' node from the list in the 'Add Node' dialog.



### **Configuring the DVR Node**

After a DVR node has been added under the 'Hikvision' node, it needs to be configured. This is accomplished by selecting the properties of the DVR node:



Select the 'Settings' tab. Fill out the following required information:

**IP:** This is the IP address of the Hikvision DVR.

**Port:** This is the port to connect to the DVR. The default port is 8000.

**Username:** Login account username to the DVR. See the documentation for Hikvision software configuration for instructions.

**Password:** The login account password for the user entered above.

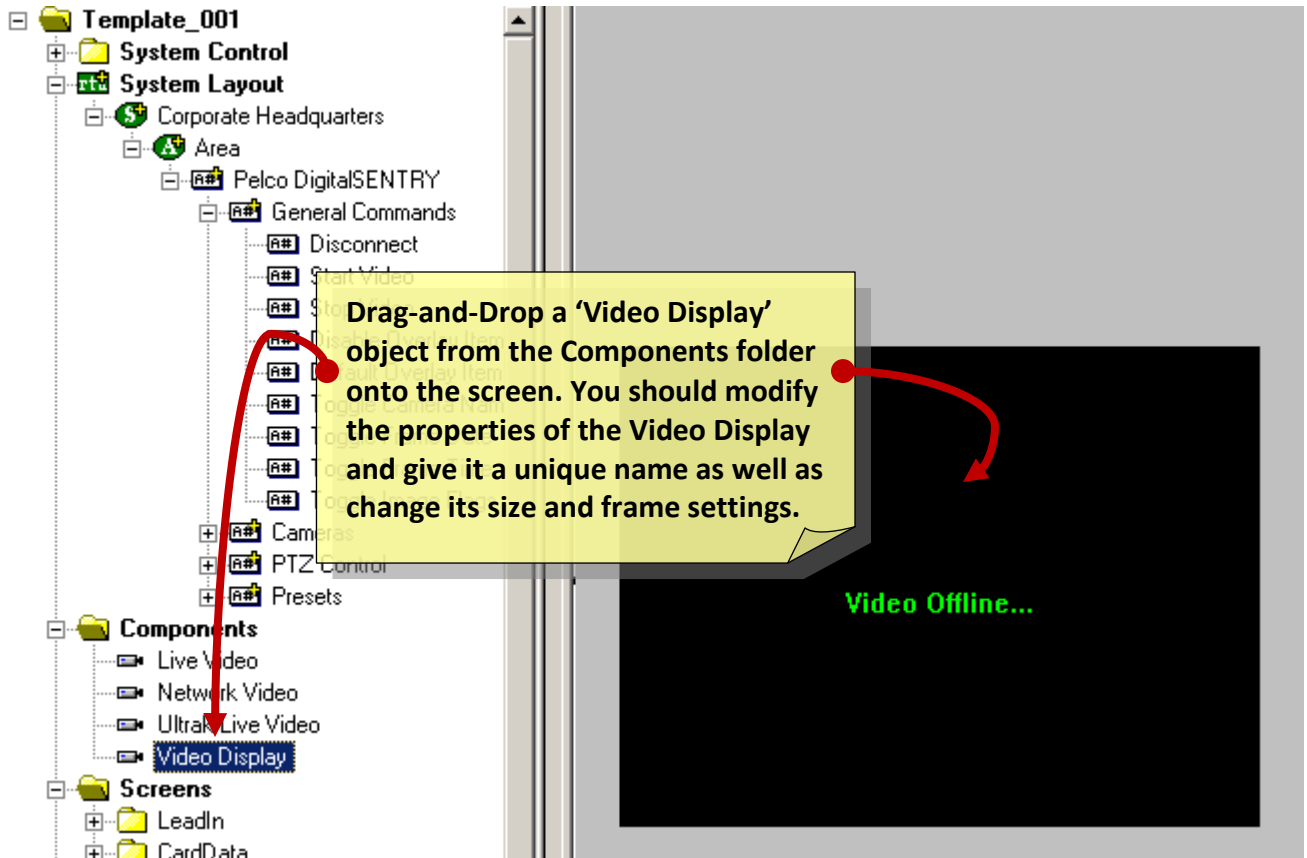
**Get Cameras:** Press this button after entering the login settings to import the DVR's cameras. The camera entries will be created and set up automatically.

## Programming Examples

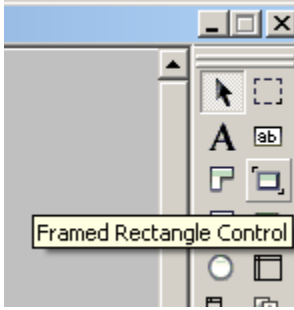
The following section describes some basic programming for Hikvision RTU functionality in Run Mode:

The first step in adding Hikvision RTU functionality is to create a Video Display Object. The Video Display Object is the display target for any Hikvision Video Channel (Camera). You can add as many Video Display Objects to a Screen as you need.

1. In Design Mode, Drag-and-Drop a 'Video Display' object from the Components folder onto the screen.



2. Create a control Screen Object (a button or icon) that directs a video channel (Camera) to the Video Display. The Action for any Hikvision command is always 'SendCommand', and the Target may be any sub-node under the Hikvision RTU. In the following example, we are sending live video stream (Camera) to the Video Display object that we created in the previous step.



3. In Run Mode select (mouse-down) the button. The resultant display should be live streaming video to the Video Display Object:



4. Additional video-related commands can be set up as SendCommand action targets, such as:
  - a. **Disconnect**: Stop & close a video feed.
  - b. **Start Video**: Un-pause a video feed.
  - c. **Stop Video**: Pause a video feed.
5. PTZ control commands will start PTZ camera movement. Send the 'Stop Move' command to end the movement. A good way to do this is to start movement on a button's Mouse Down action grid and stop it by sending 'Stop Move' on the same button's Mouse Up action grid.

The default speed when a camera is connected to the video display object is the maximum.

- a. **Speed Increase**: PTZ movements will be faster for pan and tilt actions.
- b. **Speed Decrease**: PTZ movements will be slower for pan and tilt actions.

	Action	Target
1	LiveVideo	[1101] Video Display
2	SendCommand	[1055] Hikvision->Tilt Up
3		
4		
5		
6		
7		
8		

Mouse Down (3) / Mouse Up (0) / On Active (0) /

	Action	Target
1	LiveVideo	[1101] Video Display
2	SendCommand	[1071] Hikvision->Stop Move
3		
4		
5		
6		
7		
8		

Mouse Down (2) / **Mouse Up (3)** / On Active (0) /

6. Additional PTZ Commands can be added to your project to use automatic panning mode or turn accessories on or off. To add these commands to your project, add a new node under 'PTZ Control' and edit the address on the 'General Protocol Node Settings' tab.

The 'Stop Move' command will stop movement, including Automatic Panning mode. The 'Stop Power' command will turn off power to the light, wiper, fan, heater, aux1, and aux2 devices turned on previously. The 'Stop All' command will stop all started movement functions and will also turn off any power to accessories that was turned on.

Function addresses:

- a. Automatic Panning Mode
  - i. Start: PAN\_AUTO,START
  - ii. Stop: PAN\_AUTO,STOP
- b. Light Power
  - i. On: LIGHT,START
  - ii. Off: LIGHT,STOP

- c. Wiper Power
  - i. On: WIPER,START
  - ii. Off: WIPER,STOP
- d. Fan Power
  - i. On: FAN,START
  - ii. Off: FAN,STOP
- e. Heater Power
  - i. HEATER,START
  - ii. HEATER,STOP
- f. Aux1 Power
  - i. AUX1,START
  - ii. AUX1,STOP
- g. Aux2 Power
  - i. AUX2,START
  - ii. AUX2,STOP

7. Preset nodes, when used as targets of the SendCommand action, perform the action of going to that preset's camera position.

To set a preset, create a node under 'General Commands' with the address 'SET\_PRESET,#', where # is the preset number. For example, to set the camera's preset #95 to the current position, use a SendCommand action to send the preset set node with the address: **SET\_PRESET,95**

To clear a preset, create a node under 'General Commands' with the address 'CLEAR\_PRESET,#' where # is the preset number. For example, to clear the camera's preset #95, use a SendCommand action to send the preset clear node with the address: **CLEAR\_PRESET,95**