



**Documentation**

# Ionit Video RTU Guide

## Version 3.x

# **OSSI**

**W228 N727 Westmound Dr  
Waukesha WI 53186 USA  
TEL: 262-522-1870  
FAX: 262-522-1872  
Ossi-usa.com**

# **Intelli-Site**

**Security Management Software  
Ionit Video RTU Guide**

PC Software RTU Interface Guide  
For Windows 7 SP1, 2008 R2 SP1, XP SP3 & 2003 SP2

Version 3.x  
**Copyright © 1999 – 2012 OSSI, LLC.**

## Copyright

Copyright © 1999-2012 OSSI, LLC. All rights reserved.

Information in this document is subject to change without notice. The software described in this document is furnished under a license agreement or nondisclosure agreement. The software may be used or copied only in accordance with the terms of those agreements. No part of this publication may be reproduced, stored in a retrieval system, or transmitted in any form or any means electronic or mechanical, including photocopying and recording for any purpose other than the purchaser's use without the written permission of OSSI

OSSI  
W228 N727 Westmound Dr  
Waukesha WI 53186  
TEL: 262-522-1870  
FAX: 262-522-1872

## Trademarks

**Intelli-Site**<sup>®</sup> is a registered trademark of OSSI LLC. **Intelli-Site**<sup>®</sup> is registered in U.S. Patent & Trademark Office.

All other registered and unregistered trademarks are the sole property of their respective owners.

# Table of Contents

<b>Copyright</b> .....	3
<b>Trademarks</b> .....	3
<b>Table of Contents</b> .....	3
<b>Section 1 – Introduction</b> .....	5
Overview .....	5
Technical Support Assistance .....	6
OSSI Headquarters.....	<b>Error! Bookmark not defined.</b>
Technical Support .....	<b>Error! Bookmark not defined.</b>
<b>Section 2 - Ionit DVR Setup (Design Mode)</b> .....	7
Adding DVR Nodes.....	7
Configuring the DVR Node.....	7
Programming Examples for Run Mode.....	10
<b>Section 4 – Ionit DVR Mode</b> .....	15
Using the DVR Mode .....	15
Using the Multi View Mode (Video Display Area).....	21
Main Video Controls.....	22

## **Section 1 – Introduction**

This section describes the following:

- Overview
- Technical Support Assistance

### ***Overview***

The Ionit Video RTU (Receiver/Transmitter Unit) is the Intelli-Site software representation of the Ionit Digital Video Recorder (DVR). For purposes of this document, the term RTU is synonymous with an Ionit DVR.

## ***Technical Support Assistance***

### **OSSI Headquarters**

W228 N727 Westmound Dr.

Waukesha WI 53186 USA

Tel: 262-522-1870 Fax: 262-522-1872

### **Technical Support**


Technical support is available via Telephone, Fax or Email. Contact OSSI Technical Support 8:00 AM to 5:00 PM Central Standard time. If calling after hours, please leave a detailed voice mail message, and someone will return your call as soon as possible.

E-Mail: [support@ossi-usa.com](mailto:support@ossi-usa.com)

Fax: 262-522-1872 (Attention Technical Support)

Local: 262-522-1870

When calling, please be at the computer prepared to provide the following information:

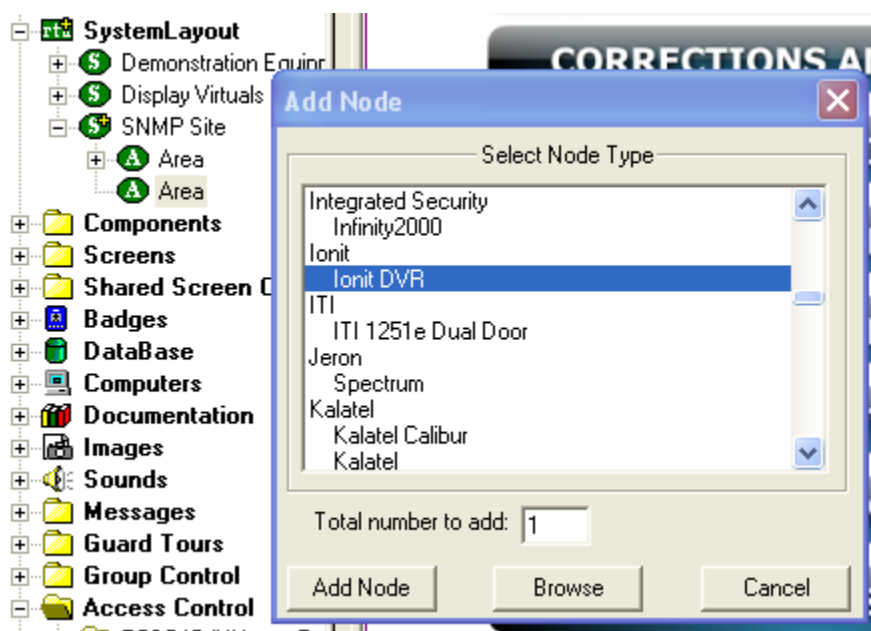
- Product version number, found by selecting the **About**  button from the Intelli-Site Menu Application Bar.
- Product serial number used for registration.
- The type of computer being used including, operating system, processor type, speed, amount of memory, type of display, etc.
- Exact wording of any messages that appear on the screen.
- What was occurring when the problem was detected?
- What steps have been taken to reproduce the problem?

## Section 2 - Ionit DVR Setup (Design Mode)

This section discusses the setup of Ionit DVRs in the project in Graphic Design mode.

### ***Adding DVR Nodes***

DVR nodes reside under an Area in the System Layout (see figures below):



As displayed, the first step is to add an 'Ionit DVR' node from the list in the 'Add Node' dialog.

### ***Configuring the DVR Node***

After a DVR node has been added, it needs to be configured. This is accomplished by Rick-Clicking and editing the properties of the DVR node:

1. General Protocol Node Setting Tab allows you to adjust the following properties:
  - a. Change the name of the DVR.
  - b. Select the Access Level.

- c. The Domain is system-selected.
- d. The Node Type is General and fixed.
- e. The Address field should not be changed here.
- f. The driver field will default to Ionit – do not change.
- g. The Protocol field should remain blank.

**Ionit DVR - Area Ionit DVR**

General Protocol Node Settings | Settings | Notes/Comments

Name:  ID:

Access Level:

Domain:

Node Type:  Driver:

Address:

Protocol:

RTU Setup

Virtual Virtual Point:   Retain

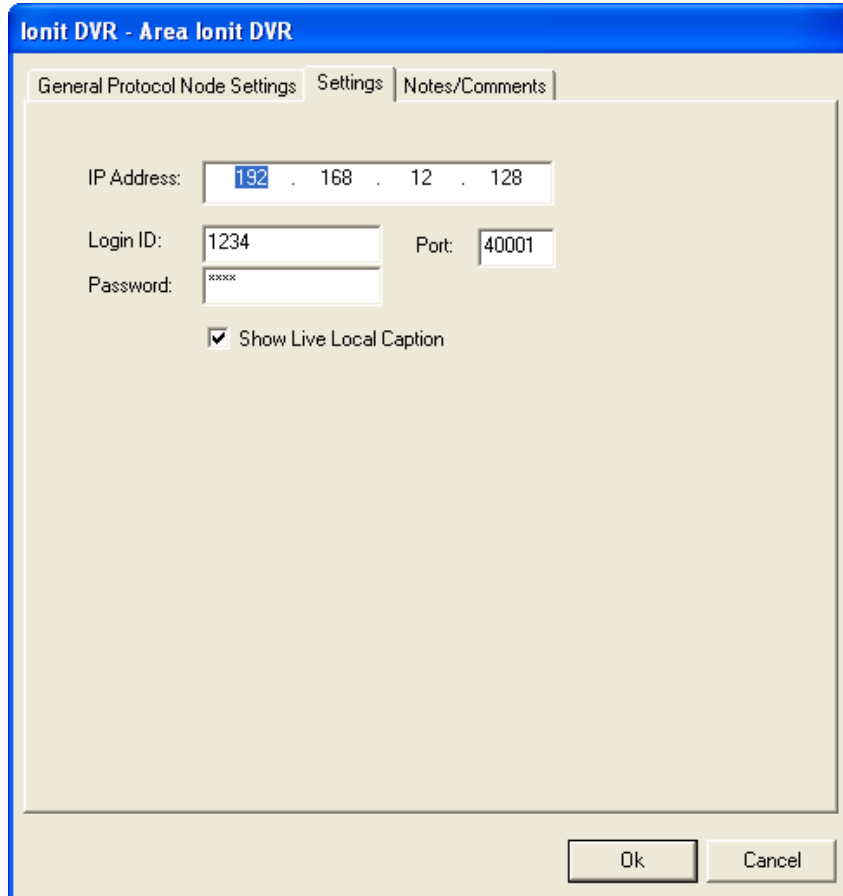
**Rename the DVR in this field.**

Ok Cancel

- 2. Settings Tab allows you to change the connection parameters:
  - a. IP Address: enter the IP address of the DVR.
  - b. Login ID: enter the DVR user identification.
  - c. Password: enter the DVR password.



- d. Port: Enter the port number (usually default).
- e. Show live local caption: Check this box if you want to display the DVR channel's name, date and time caption in the Video Display.



- 3. Commands Subnode allows you to Stop Video, Turn Audio On and Turn Audio Off. The action for these nodes is always SendCommand.
- 4. Cameras Sub node allows you to connect to the available camera channels. The action for these nodes is always SendCommand.
- 5. PTZ Control Subnode allows you to execute Pan, Tilt and Zoom commands against camera channels that are appropriately equipped with PTZ controllers. The action for these nodes is always SendCommand.

6. Presets Sub node allows you to set PTZ cameras to various preset positions. The action for these nodes is always SendCommand.

## ***Programming Examples for Run Mode***

After a DVR node has been configured in the design tree you can use elements of the DVR node for a variety of Run Mode applications. The following Section details some examples of DVR applications that can be programmed for Run Mode:

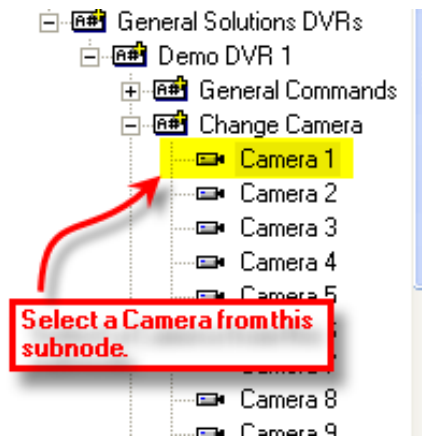
### **1. Live Video Display and Control Programming Example**

The following programming example will detail the steps necessary to create a video display object and various controls that will allow video switching on a Run Mode Screen.

**Step 1** – In Design Mode, Drag-and-Drop a Video Display object, from the Components Node in the Tree, onto the Screen. The Video Display object is always used as the display target for Ionit video. There is no limit to the number of Video Display objects that can be on any one screen. When dropped, the Video Display Object will automatically size to 320X240 but can be resized to fit your needs.



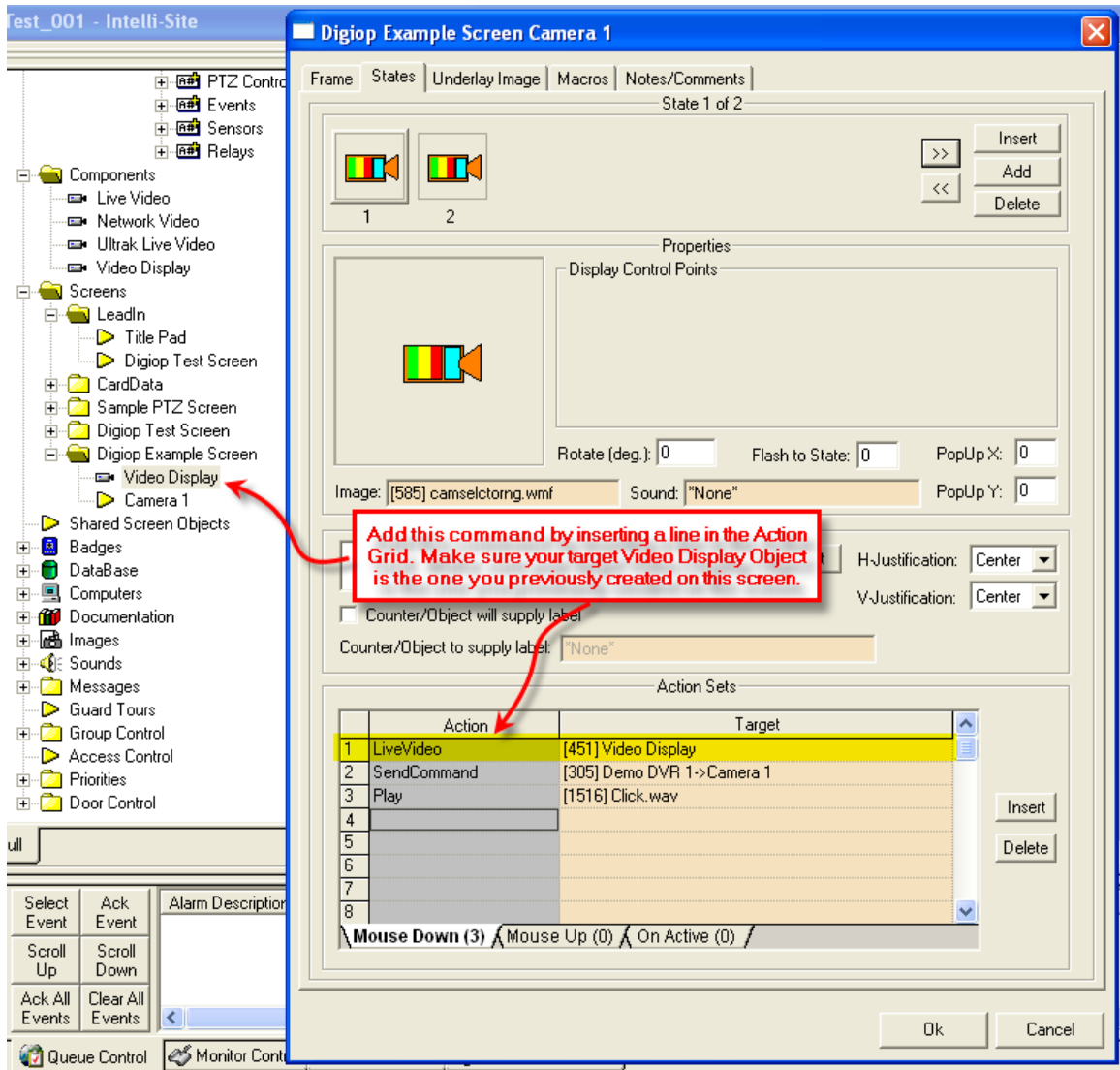
**Step 2** – Drag-and-Drop a Camera from the Change Cameras subnode of the DVR onto the tree. This will automatically create a camera screen object. Use the Default settings when prompted by the wizard.



At this point your screen should look something like this:



**Step 3** - In order to send the video, called by the Camera object, to the Video Display object created in Step 1, you will have to modify the properties of the Camera Object by adding a LiveVideo command before the SendCommand for the Camera as follows:

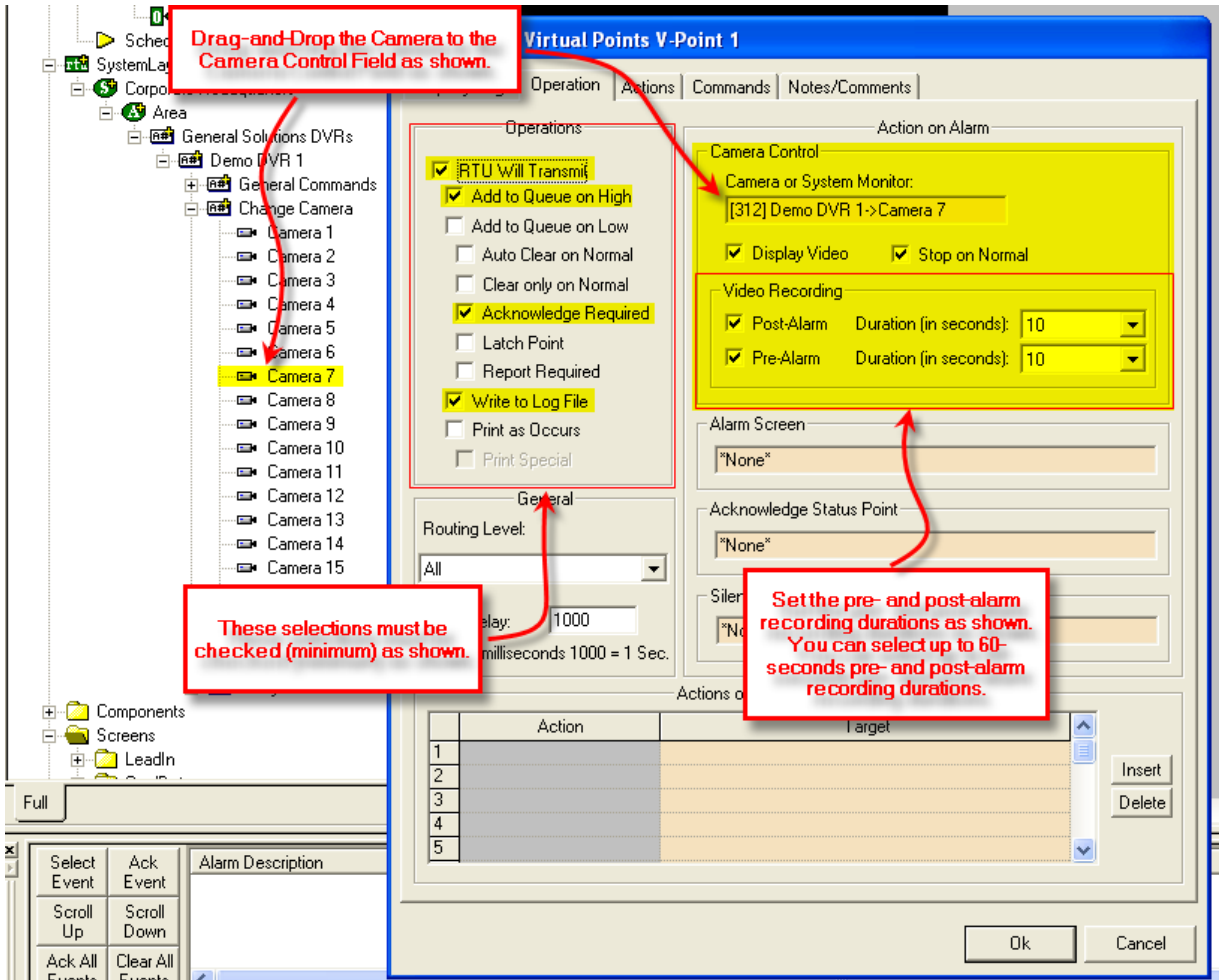


## 2. Alarm-Related DVR Video-On-Demand Programming Example

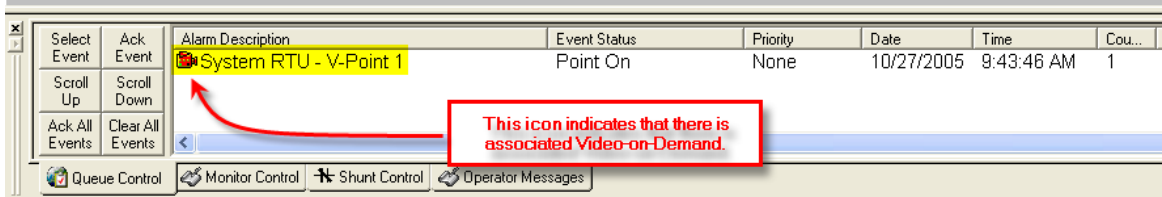
The following example will detail the steps necessary to program an alarm-point relationship to a Camera object for Video-on-Demand functionality.

When an alarm point is activated, pre-and post-alarm recorded video is “tagged” for automated recall during alarm acknowledgement.

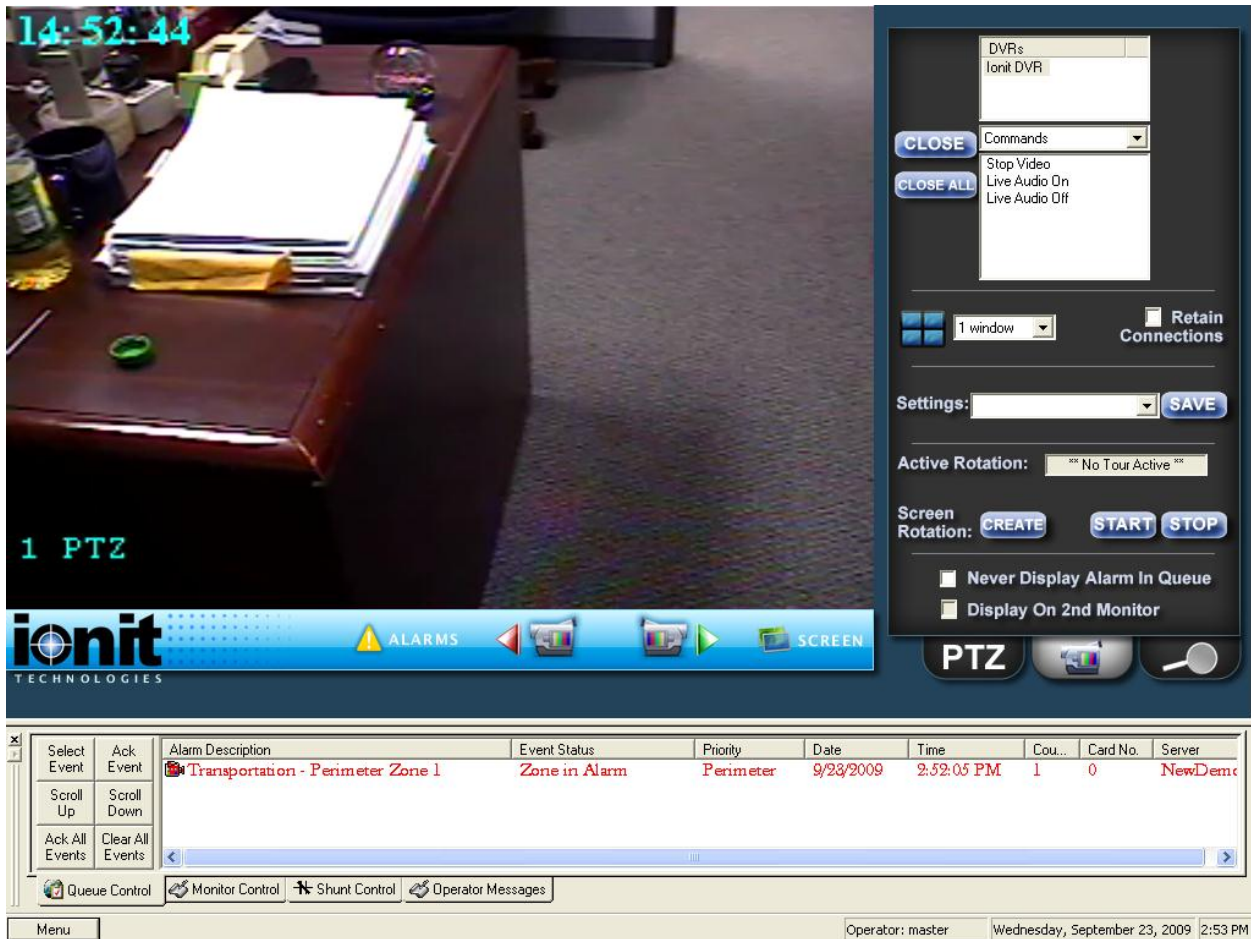
**Step 1** – Using any I/O point in the tree (in this case we are using a Virtual Point) you can set the properties of the I/O point to enable pre- or post-alarm recording (or both) as shown below:



**Step 2** – Upon I/O point activation the alarm will appear in the Queue with a video-associated icon as shown below:



**Step 3** – Double-Left-Click on the icon will automatically switch to the Ionit DVR Mode and replay the pre-and-post alarm video from the associated channel:



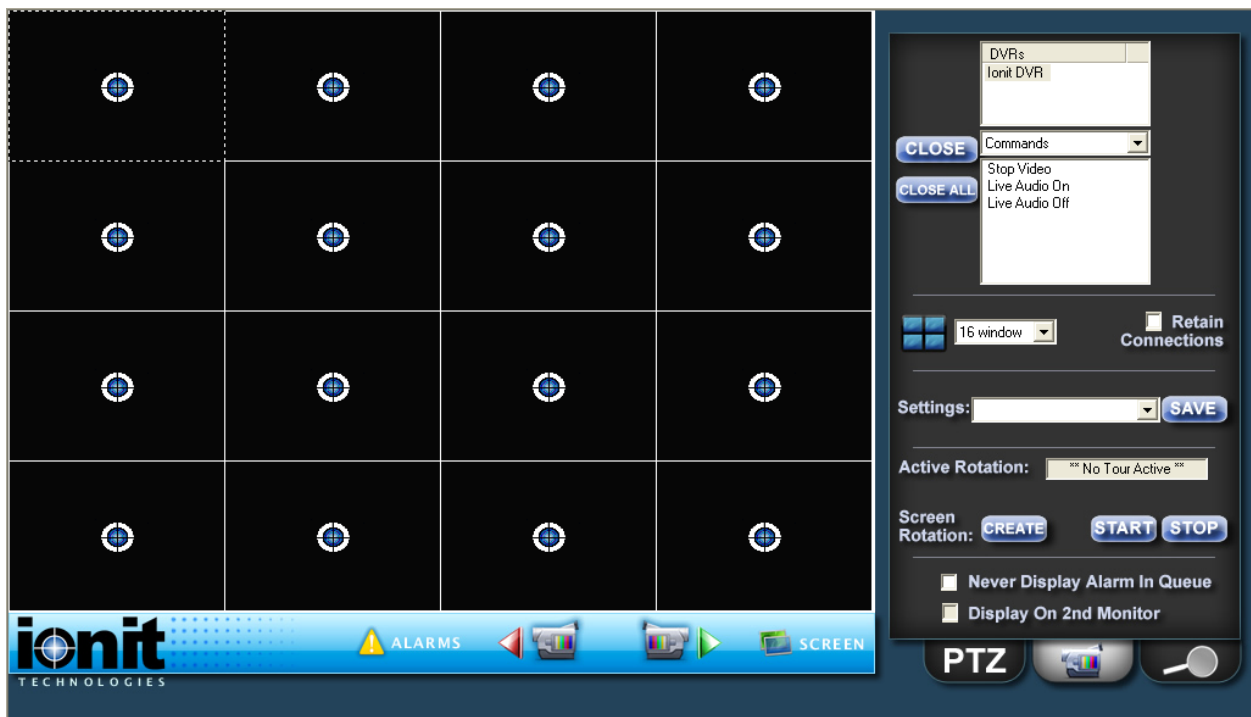
## Section 4 – Ionit DVR Mode


This section discusses the use of the Ionit DVR Multi View Mode.

### Using the DVR Mode



Click on the  icon on the Application Menu bar in order to switch to the DVR Mode.



1. General Settings Tab  allows you to set display, control, and camera tour parameters.
  - a. DVRs – This window will list all of the DVR nodes in the Design Mode tree. You can display all available channels for a specific DVR by Dragging and Dropping the selected DVR on to the Video Display Area.

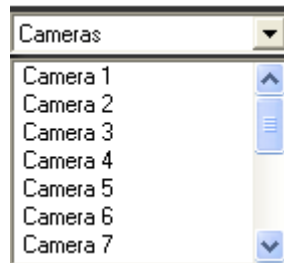


- b. Commands Combo Box – select commands to be applied to specific display areas in the categories of General Commands, Cameras Commands, PTZ Commands and Presets. First Select the command desired, then Drag-and-Drop the command on to the specific camera view in the Video Display Area.



i. Commands



- 1. Stop Video – Stops video streaming for the channel specified for live video streaming.
- 2. Live Audio On – Enables audio listen-in for the selected channel.
- 3. Live Audio Off – Disables audio listen-in for the selected channel.

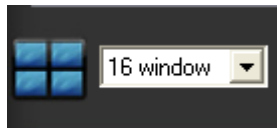




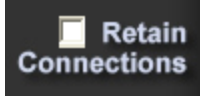
- ii. Camera Commands – Lists all of the camera channels available for the selected DVR in the DVRs list. Drag-and-Drop the desired Camera on to the specific view in the Video Display Area.



- iii. PTZ Control Commands – Drag-and-Drop the desired PTZ control command on to the specific view in the Video Display Area in order to execute that command. This, of course, only works if the camera is PTZ-capable.
- c. Close button –  stops a selected video channel.
- d. Close ALL Button -  stops all video channels.
- e. Screen Division – The Screen Division window allows you to select the number, and layout, of video display windows in the Video Display Area.
  - i. Screen Division Combo Box – allows you to select from 1, 4, 8, 9, 10, 13, 16, 25 or 36 windows for the Video Display Area.



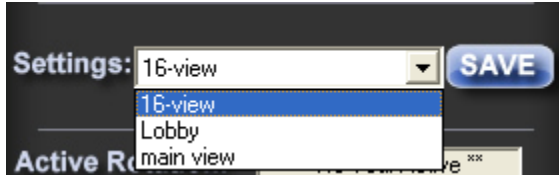
- ii. Retain Connections – checking this box will retain currently-connected video channels when you switch from one division settings to another.




- iii. Settings Save – allows you to set up a custom display and save the settings for the custom setup for later recall. An application example of this feature would be to create a display that shows specific video channels from a number of different DVRs that are located in different buildings in the network – say; all lobby cameras from ten-different buildings.

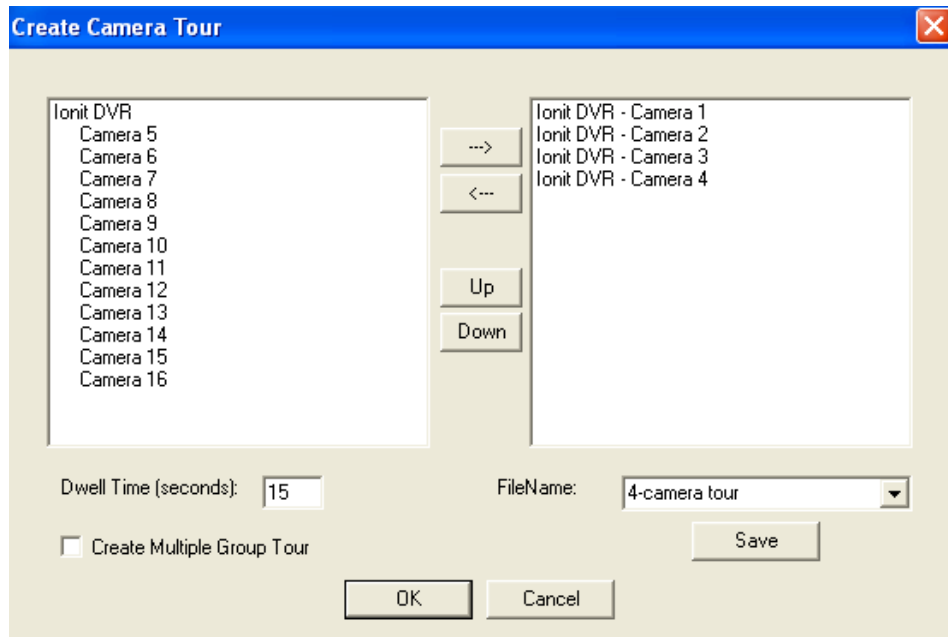


Once these settings are saved they can be instantly retrieved from the Settings Combo-Box.



- f. Active Rotation (Video Tours) – This feature allows you to create and run sequential video tours consisting of any number of cameras or even groups of tours consisting of groups of camera groups.

- i. Create a Camera Tour – Select the  button to open the Create Camera Tour dialog. All available cameras will be listed in the left window. Simply use the Add or Delete arrows to add the desired cameras to your tour list in the right window. Next enter a Dwell Time – this is the amount of time a camera will display before switching to the next in the list. Finally, enter a FileName and Select the Save Button. Select the OK Button when finished.



- ii. Create a Group Tour – Select the Create Multiple Tour Group checkbox. When selected, the left window will display all tours previously saved. Simply select the tours you wish to include in the Multiple Group Tour, give it a filename, and hit the Save Button.



- iii. Running a Tour or Multiple Tour Group – Start the tour with the Start Button **START** and the Start Camera Tour dialog will open. Select the tour you wish to run from the Combo-Box. To stop the tour, select the Stop button **STOP**.



- g. Additional settings – Select the Never Display Alarm Queue if you do not wish to see DVR-originated alarms in the alarm queue. Select Display on 2<sup>nd</sup> Monitor if you wish to display the DVR Mode on the 2<sup>nd</sup> Monitor in a dual-monitor workstation.

- 2. PTZ Tab **PTZ** – Allows you to control PTZ functionality for a specific, PTZ-equipped camera.



3. Video Playback Tab  - Allows you to accomplish Video File search, retrieval and playback. Simply select the video channel (camera) from the Camera drop-down menu, enter the beginning and ending dates and times, and select the  button. Video play back controls below will allow you to pause, stop, fast forward/rewind and jog the playback video.



***Using the Multi View Mode (Video Display Area)***

The main window (Video Display Area) of multi view consists of a viewing area and four control buttons.

If you double-click on any of the individual video display views, the view will expand to full size. To return, simply double-click on the full-size view.

### Main Video Controls



**Previous Camera:** Allows user to scroll backwards through available channels.



**Next Camera:** Allows user to scroll forward through available channels.



**Full Screen:** This feature will expand the multi channel view to full screen. Just hit 'Escape' key to return.



**Alarm Events:** This feature brings up a dialog that can be used to search for alarm events that are associated with cameras.

Date	Time	Alarm/Event
05/20/2005	10:50:06	System RTU - V-Point 16
05/20/2005	10:38:12	System RTU - V-Point 16
05/20/2005	10:38:10	System RTU - V-Point 16
05/18/2005	08:03:12	System RTU - V-Point 16
05/18/2005	08:02:52	System RTU - V-Point 16