

Documentation

Tamper Alert RTU Guide

Version 3.x

OSSI

**W228 N727 Westmound Dr
Waukesha WI 53186 USA
TEL: 262-522-1870
FAX: 262-522-1872
Ossi-usa.com**

Intelli-Site

Security Management Software Tamper Alert RTU Guide

PC Software RTU Interface Guide
For Windows 7 SP1, 2008 R2 SP1, XP SP3 & 2003 SP2

Version 3.x
Copyright © 1999 – 2012 OSSI, LLC.

Copyright

Copyright © 1999-2012 OSSI, LLC. All rights reserved.

Information in this document is subject to change without notice. The software described in this document is furnished under a license agreement or nondisclosure agreement. The software may be used or copied only in accordance with the terms of those agreements. No part of this publication may be reproduced, stored in a retrieval system, or transmitted in any form or any means electronic or mechanical, including photocopying and recording for any purpose other than the purchaser's use without the written permission of OSSI

OSSI
W228 N727 Westmound Dr
Waukesha WI 53186
TEL: 262-522-1870
FAX: 262-522-1872

Trademarks

Intelli-Site[®] is a registered trademark of OSSI LLC. **Intelli-Site**[®] is registered in U.S. Patent & Trademark Office.

All other registered and unregistered trademarks are the sole property of their respective owners.

Table of Contents

Copyright	3
Trademarks	3
Table of Contents	3
Section 1 – Introduction	5
Overview	5
Technical Support Assistance	6
OSSI Headquarters.....	Error! Bookmark not defined.
Technical Support	Error! Bookmark not defined.
Section 2 – Tamper Alert RTU Configuration	7
Adding a Tamper Alert RTU to the Intelli-Site Tree....	7
Add an RTU – Procedure	7
Import an RTU – Procedure	8
Tamper Alert RTU Node.....	10
Programming Examples.....	10
Displaying the Status of a Point.....	10
Displaying the Meter a Cut Occurred	12

Section 1 – Introduction

This section describes the following:

- Overview
- Technical Support Assistance

Overview

The Tamper Alert RTU (Receiver/Transmitter Unit) is the Intelli-Site software representation of the USSI Tamper Alert product. For the purposes of this document, the term RTU is synonymous with control panel.

The Tamper Alert RTU provides for user monitoring of all Tamper Alert alarms, including:

- Driver Online status
- Line cut (including meter of the cut)
- Zone alarms

Technical Support Assistance

OSSI Headquarters

W228 N727 Westmound Dr.

Waukesha WI 53186 USA

Tel: 262-522-1870 Fax: 262-522-1872

Technical Support


Technical support is available via Telephone, Fax or Email. Contact OSSI Technical Support 8:00 AM to 5:00 PM Central Standard time. If calling after hours, please leave a detailed voice mail message, and someone will return your call as soon as possible.

E-Mail: support@ossi-usa.com

Fax: 262-522-1872 (Attention Technical Support)

Local: 262-522-1870

When calling, please be at the computer prepared to provide the following information:

- Product version number, found by selecting the **About**  button from the Intelli-Site Menu Application Bar.
- Product serial number used for registration.
- The type of computer being used including, operating system, processor type, speed, amount of memory, type of display, etc.
- Exact wording of any messages that appear on the screen.
- What was occurring when the problem was detected?
- What steps have been taken to reproduce the problem?

Section 2 – Tamper Alert RTU Configuration

This section describes adding a Tamper Alert RTU to the Intelli-Site tree.

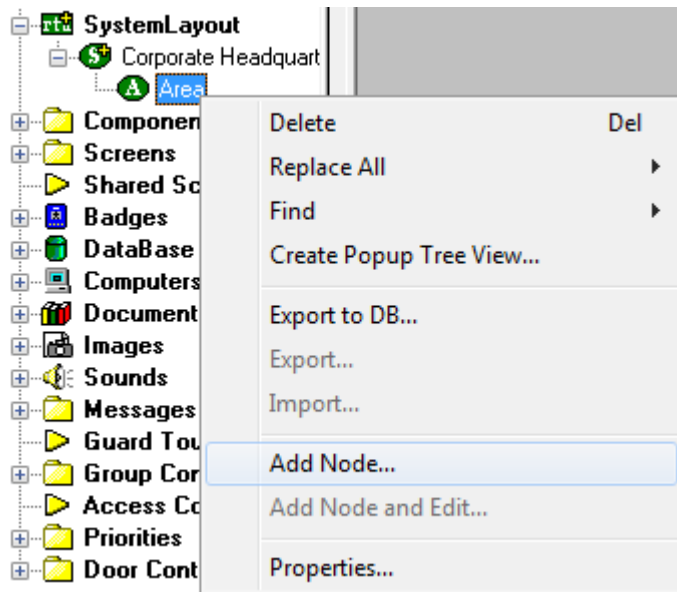
Adding a Tamper Alert RTU to the Intelli-Site Tree



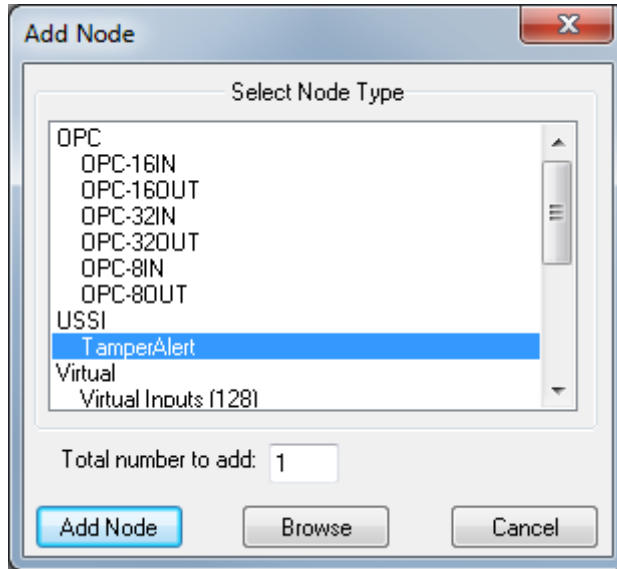
The following section will describe how to add one or more Tamper Alert RTU nodes to the tree. All procedures described in this section are accomplished in Design Mode.

Add an RTU – Procedure

1. Expand the System Layout Node and Right-Click on an Area. Select **Add Node...** from the Shortcut Menu as shown below:



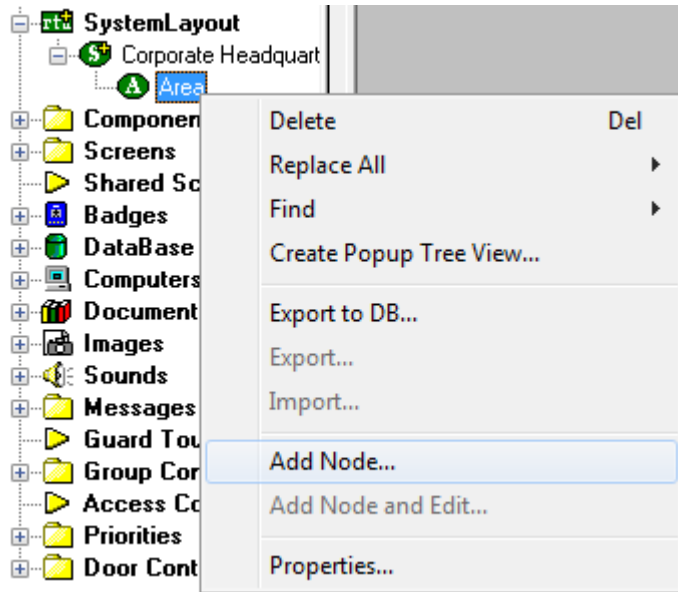
2. Select the Tamper Alert RTU, then enter the number of panels you wish to add to the tree in the **Total number to add:** edit box. You may add multiple panels to an area.



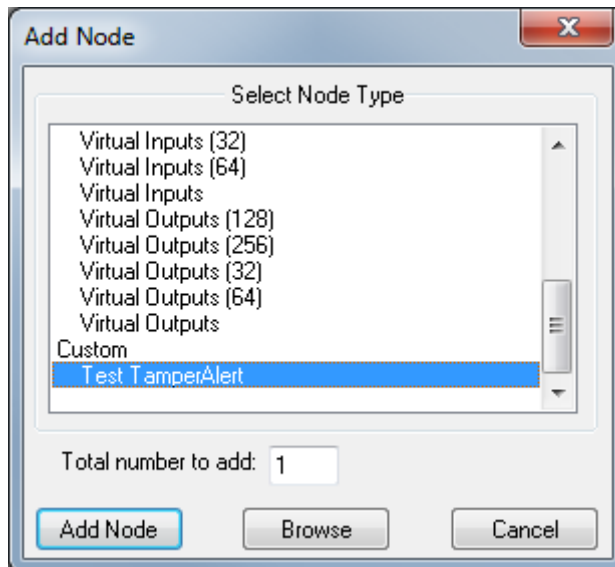
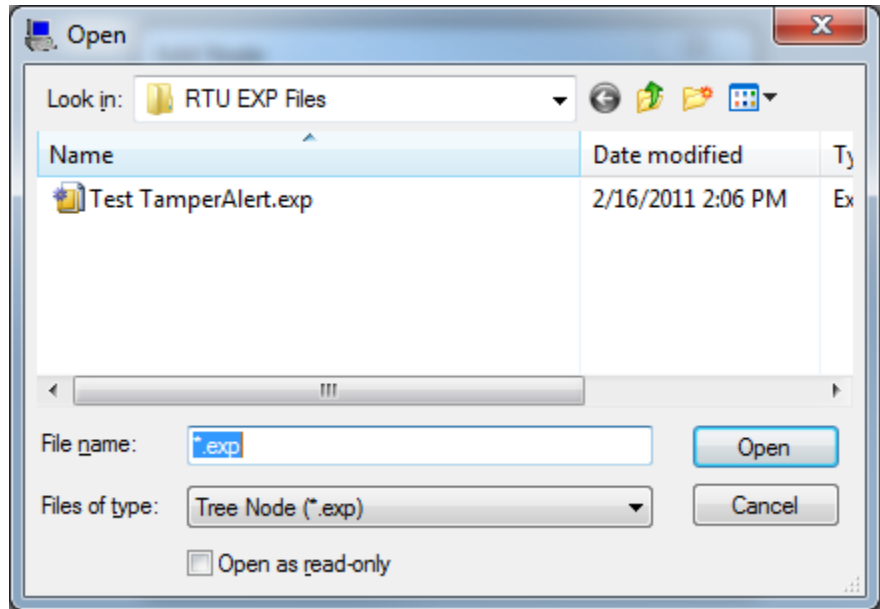
3. The RTU(s) will be added to the tree and the system level Text-To-Speech message "**Node Added**" will sound.

Import an RTU – Procedure

1. Expand the System Layout Node and Right-Click on an Area. Select **Add Node...** from the Shortcut Menu as shown below:

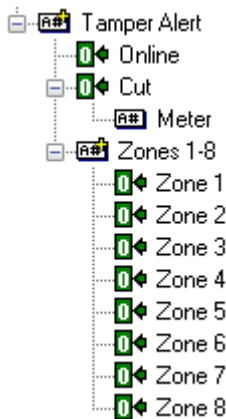


2. Select the **Browse** button on the **Add Node** dialog: A browse window will open. Browse to the appropriate location then select the RTU .exp file you wish to import and select the **Open** button. A new type (**Custom**) will be automatically added to the **Add Node** dialog and the imported .exp will be listed below the **Custom** type.



3. Select the imported RTU then enter the number of panels you wish to add to the tree in the **Total number to add:** edit box. You may add multiple panels to an area.
4. The RTU(s) will be added to the tree and the system level Text-To-Speech message **"Node Added"** will sound.

Tamper Alert RTU Node



The following section describes configuration of the various elements of the Tamper Alert RTU.

Note: The Tamper Alert software only allows for monitoring of status. Therefore, all points in the Tamper Alert RTU are status points only.

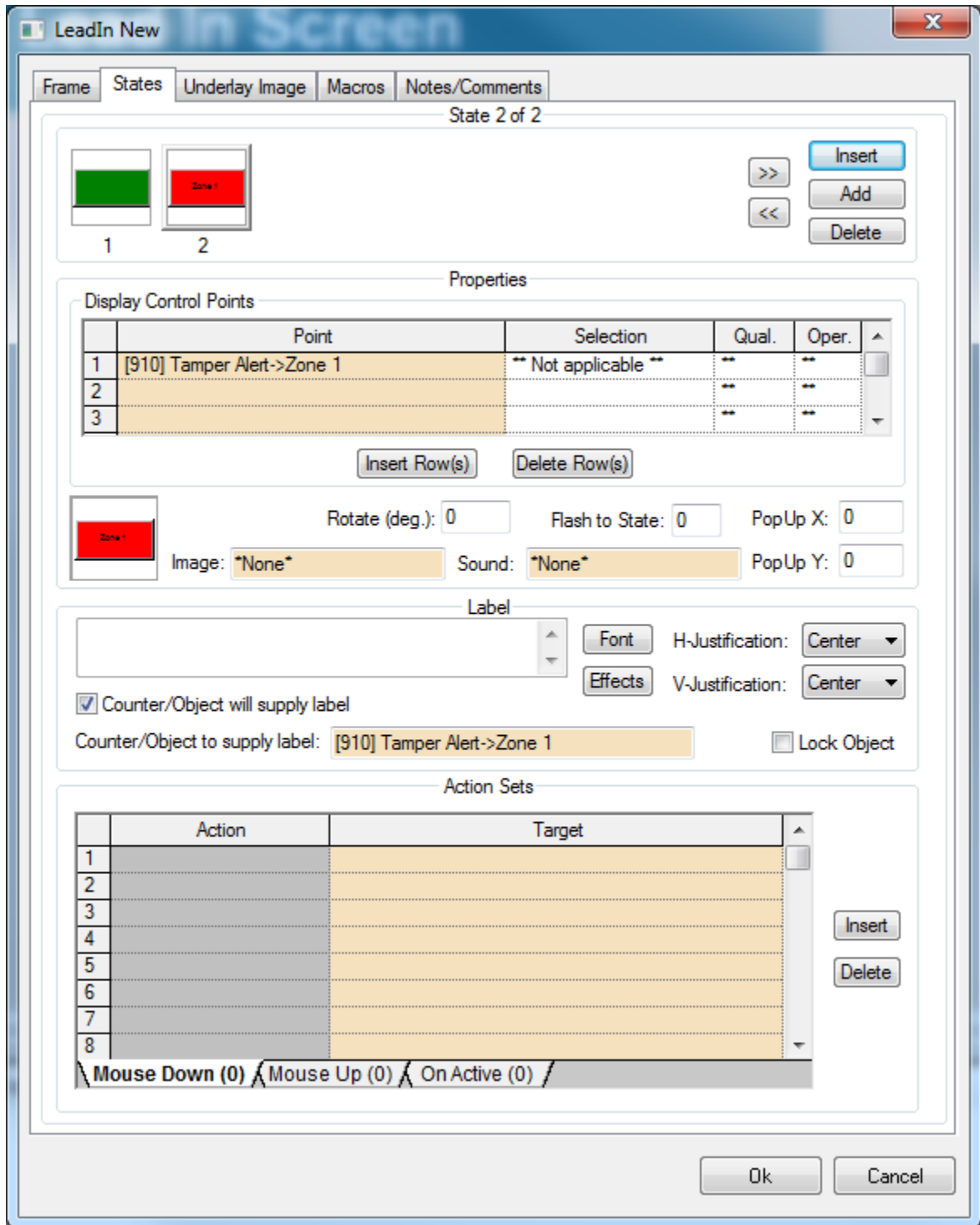
The Tamper Alert RTU consists of a parent (the basic panel node) and three children as follows:

- **Online** – This point will be on if the Tamper Alert driver is communicating with the Tamper Alert software, and off if not.
- **Cut** – This point will be on if the Tamper Alert software is communicating a Cut condition, and off if not. If the Cut condition is active, the Meter label point will have the meter of the cut.
- **Zones 1-8** – The status of the eight zones' status as reported by the Tamper Alert software

Programming Examples

Displaying the Status of a Point

To use the Tamper Alert RTU for monitoring the status of its points, add a graphic icon to a screen as described in the **Intelli-Site Reference Guide, Section 4: Managing Graphics**. Simply use the Tamper Alert point that you wish to monitor as the display control point for the state you wish to display.



Displaying the Meter a Cut Occurred

To display the meter at which a Cut occurred, add a graphic icon to a screen as described in the **Intelli-Site Reference Guide, Section 4: Managing Graphics**. Simply use the Cut as the display control point for the state you wish to display, check the **“Counter/Object will supply the label”** checkbox, and use the Meter point as the Counter/Object to supply the label point.

