

Documentation

Alien Handheld RTU Guide Version 3.9

OSSI

**W228 N727 Westmound Dr
Waukesha WI 53186 USA
TEL: 262-522-1870
FAX: 262-522-1872
Ossi-usa.com**

Intelli-Site

**Security Management Software
Alien Handheld RTU Guide**

PC Software RTU Interface Guide
For Windows 7 SP1, 2008 R2 SP1, XP SP3 & 2003 SP2

Version 3.9
Copyright © 1999 – 2012 OSSI, LLC.

Copyright

Copyright © 1999-2012 OSSI, LLC. All rights reserved.

Information in this document is subject to change without notice. The software described in this document is furnished under a license agreement or nondisclosure agreement. The software may be used or copied only in accordance with the terms of those agreements. No part of this publication may be reproduced, stored in a retrieval system, or transmitted in any form or any means electronic or mechanical, including photocopying and recording for any purpose other than the purchaser's use without the written permission of OSSI

OSSI
W228 N727 Westmound Dr
Waukesha WI 53186
TEL: 262-522-1870
FAX: 262-522-1872

Trademarks

Intelli-Site[®] is a registered trademark of OSSI LLC. **Intelli-Site**[®] is registered in U.S. Patent & Trademark Office.

All other registered and unregistered trademarks are the sole property of their respective owners.

Table of Contents

Copyright..... 3

Trademarks..... 3

Table of Contents 4

Section 1 – Introduction..... 5

Overview 5

Technical Support Assistance 6

 OSSI Headquarters.....**Error! Bookmark not defined.**

 Technical Support**Error! Bookmark not defined.**

Section 2 – Alien Handheld RTU Setup 7

Adding Alien Handheld RTU Nodes..... 7

Configuring the Alien Handheld Node 8

Section 3 – Alien Handheld and the Driver Service 9

Section 4 – RFID Access Rights and Information Management..... 13

Underlying Database Tables**Error! Bookmark not defined.**

Screen Design for Table Maintenance and Review
.....**Error! Bookmark not defined.**

Database Filtering Example **Error! Bookmark not defined.**

Grid Setup to Maintain Access Rights ..**Error! Bookmark not defined.**

Section 4 – Alien Driver Setup**Error! Bookmark not defined.**

Adding and Configuring an Alien Driver **Error! Bookmark not defined.**

AlienRFID – RFID Panel Settings..... **Error! Bookmark not defined.**

Section 1 – Introduction

This section describes the following:

- Overview
- Technical Support Assistance

Overview

The Alien Handheld RTUs (Receiver/Transmitter Units) are the Intelli-Site software representations of the Alien Handheld device used to read RFID tags.

There are two parts to the Alien Handheld RTU, the actual RTU in the Intelli-site Integration software and the corresponding software on the Alien handheld device. This document will describe the setup for both.

Once the various parts of the software are configured to be use the Alien Handheld, there are steps to go through to define tag holders and zones. These steps will also be detailed.

Technical Support Assistance

OSSI Headquarters

W228 N727 Westmound Dr

Waukesha WI 53186 USA

Tel: 262-522-1870 Fax: 262-522-1872

Technical Support


Technical support is available via Telephone, Fax or Email. Contact OSSI Technical Support 8:00 AM to 5:00 PM Central Standard time. If calling after hours, please leave a detailed voice mail message, and someone will return your call as soon as possible.

E-Mail: support@ossi-usa.com

Fax: 262-522-1872 (Attention Technical Support)

Local: 262-522-1870

When calling, please be at the computer prepared to provide the following information:

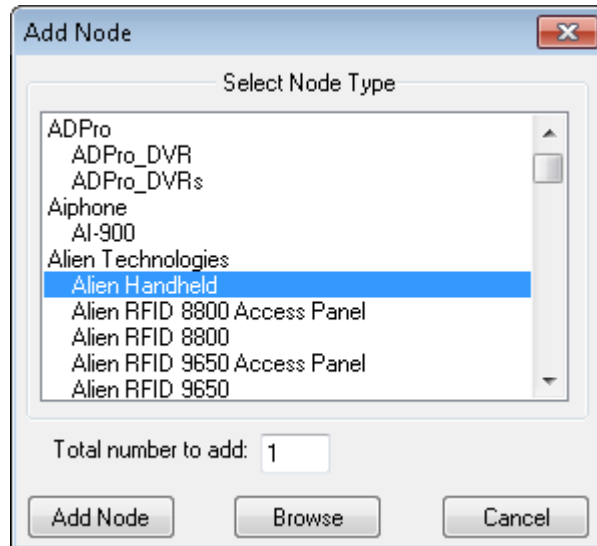
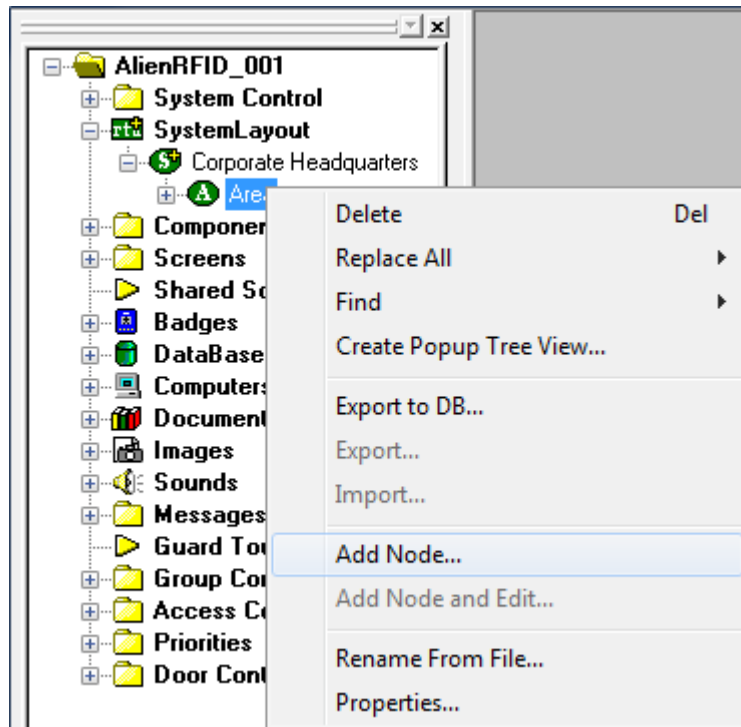
- Product version number, found by selecting the **About**  button from the Intelli-Site Menu Application Bar.
- Product serial number used for registration.
- The type of computer being used including, operating system, processor type, speed, amount of memory, type of display, etc.
- Exact wording of any messages that appear on the screen.
- What was occurring when the problem was detected?
- What steps have been taken to reproduce the problem?

Section 2 – Alien Handheld RTU Setup

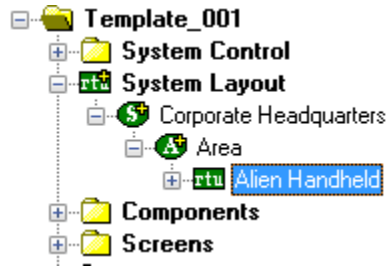
This section discusses the setup of Alien Handheld RTUs in the project in Graphic Design mode.

Adding Alien Handheld RTU Nodes

Alien Handheld RTU nodes are added by selecting the 'Add Node' menu option:

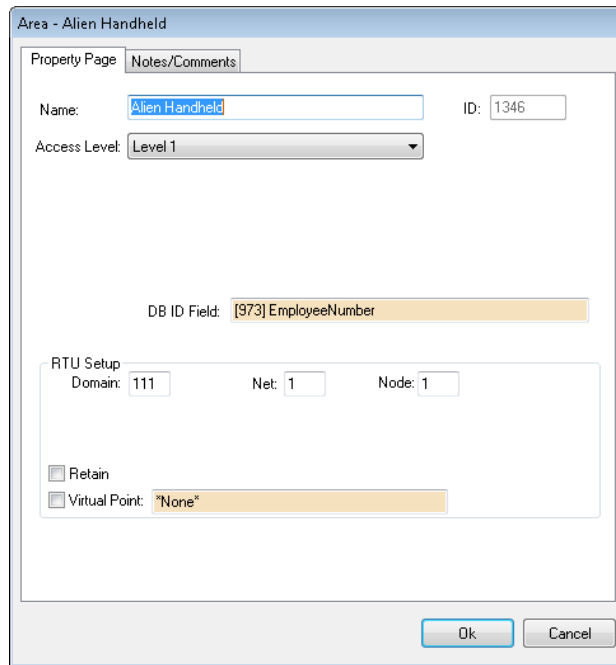


After selecting 'Add Node', a new Alien Handheld node will be created:



Configuring the Alien Handheld Node

After an Alien Handheld node has been added, it needs to be configured. This is accomplished by selecting the properties of the Alien Handheld node:



DB ID Field: In the DB ID field, drag and drop the database item that is the identifier for the tag holder that the handheld will scan. The user of the handheld will have to verify by name, photo and identifier that the person holding the tag is the person that is associated with the tag.

RTU Setup: Each Alien Handheld device must have a different Domain number.

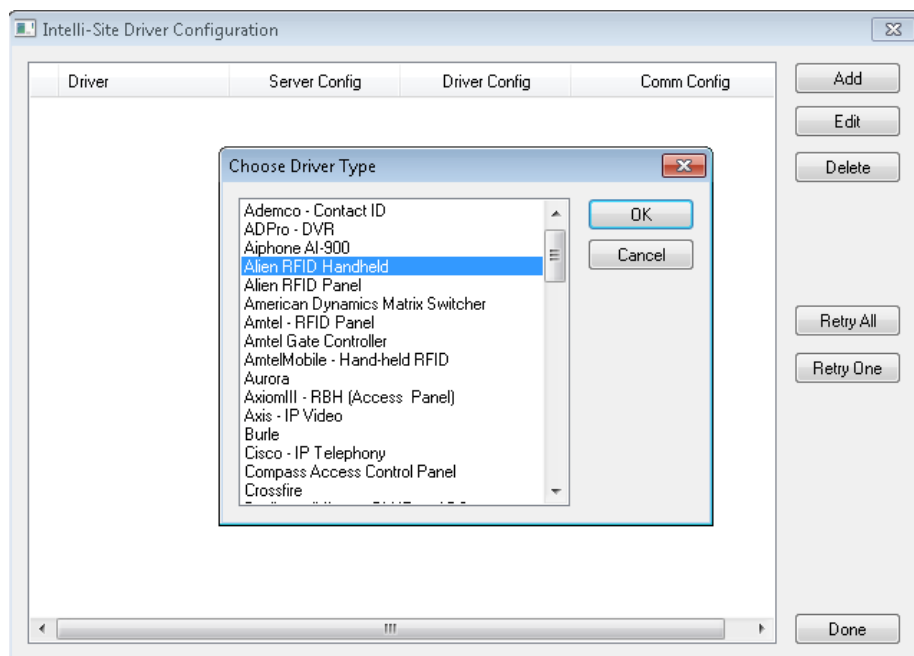
Section 3 – The Driver Service

This section discusses the setup of Alien Handheld RTUs in the Driver Service.

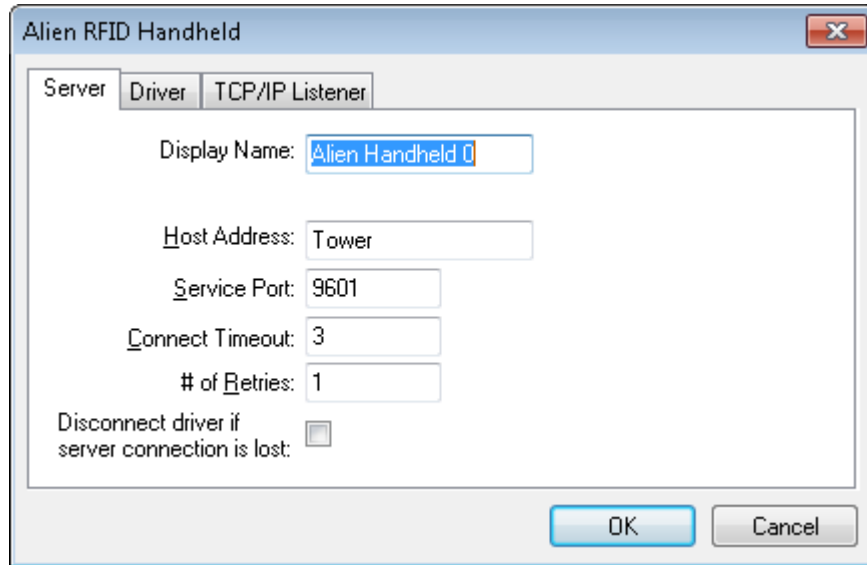
Driver Service Setup

Right click on the Driver Service icon in the tray and select Open from the menu. This brings up the Driver Service Configuration window. You will need to add a driver for each Alien Handheld RTU defined in the Intelli-Site Workstation.

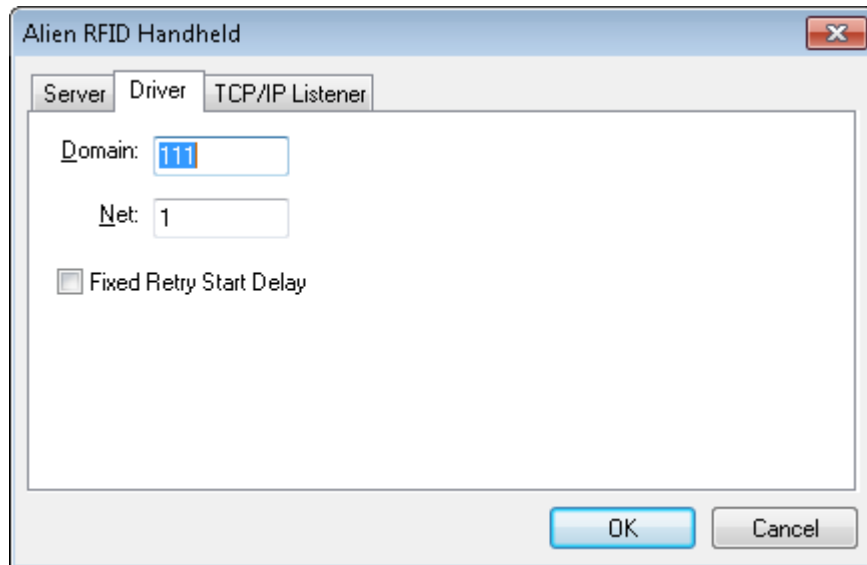
Click the add button. The Choose Driver Type window appears.



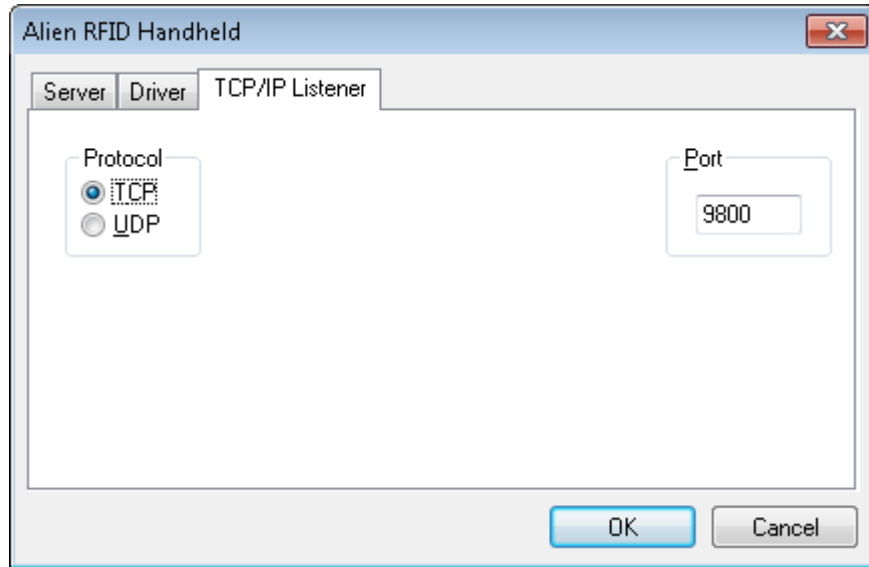
Highlight the Alien RFID Handheld item then press OK. The Alien RFID Handheld configuration window appears.



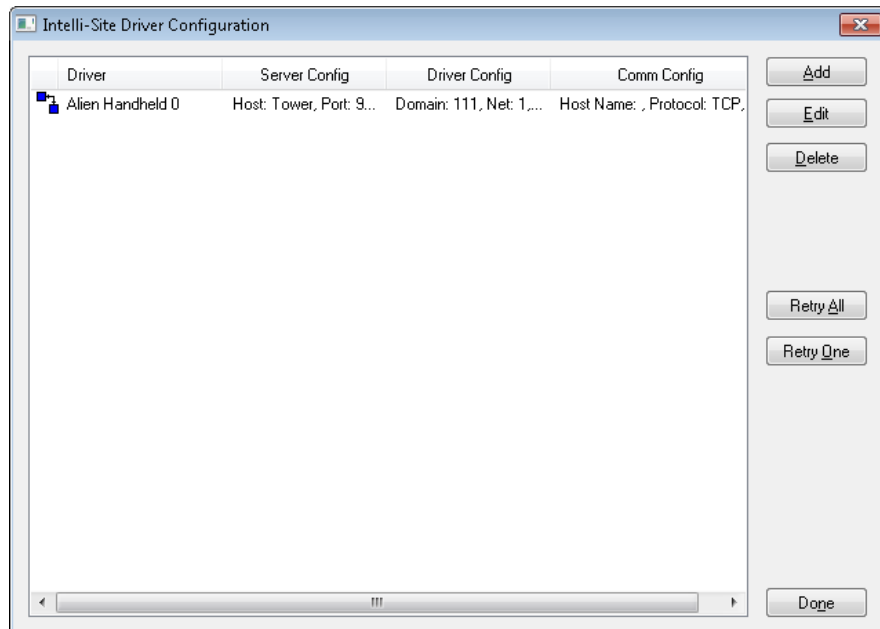
On the Driver tab, fill in the correct Domain and Net from the RTU in the Workstation to which this one will correspond.



On the TCP/IP Listener tab, enter the port number to which the Alien Handheld will connect. Each Alien Handheld must connect on a different port. When configuring the Handheld itself, you will need to provide this port number.



Press OK. The Intelli-Site Driver Configuration window will show the Alien Handheld driver.



Notice the blue symbol indicating that the driver is not started. Right click on the driver and select

“Online”. The symbol will turn green on the top red on the bottom when it goes online. When the Alien Handheld connects, the symbol will be green on both ends of the symbol.

Section 4 – Alien Handheld

This section discusses the setup of the Alien Handheld itself.

Overview

ISAlienReader.exe is the Intelli-Site program on the Alien Handheld that communicates with the Intelli-Site Server. It reads the tag, sends the tag information to the Server, receives tag holder information from the Server, presents that information to the person scanning the tags so he may confirm the tag holder's identity, then informs the Server that the tag holder is now in a different Zone. All of this communication is done via TCP/IP.

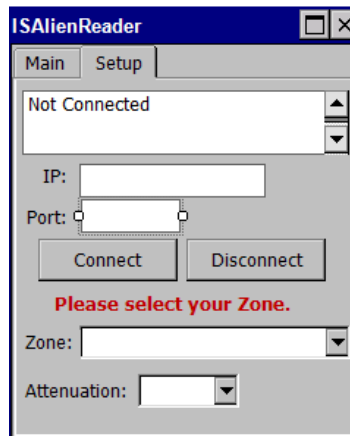
Installation

Unzip the ISAlienReader archive into Program Files\Intelli-Site\ISAlienReader. Two files will be extracted: ISAlienReader.exe and the NRFIDAPI.dll. You may want to create a shortcut and put it on the desktop for ease of use.

Setup

The first time the program is launched it will give you a message box saying "Cannot connect to (IP:Port) (:9800). Verify the IP address and Port number."

Click OK. You will be on the Setup tab.



The Setup tab has a status box, IP address, Port, Connect, Disconnect buttons, Zone list, and Attenuation.

IP: - This is the IP address of the computer running the Intelli-Site Server. The first time the handheld is run, this field is blank. Once this field is set, the program stores the information and will use it the next time the program is launched.

Port: - This is the port number defined in the Intelli-Site Driver Service for the driver that this handheld is expected to connect with. The default number is 9800. If you have more than one handheld unit, each handheld must use a different port number. The program will save this number and use it the next time the program is launched.

Connect and Disconnect buttons - The buttons initiate connection to and disconnection from the Intelli-Site Server.

Zone: - This is the destination zone for the tag holders. Upon successful connection to the Server the words "Please select your Zone." are present above the Zone dropdown box. You must select a zone before a tag holder can be moved into it. Press the dropdown arrow or move the cursor into the box. The list of possible zones appears. This list was given to the handheld by the Server. Select the zone that is the destination for the tag holders. Once a zone is selected, the red letters will disappear and the title bar will display the zone name.

It is possible to change the zone without disconnecting from the Server. Just return to the Setup tab and select a different zone. Every tag scanned after the zone change will be put in the new zone. The tags scanned previously will not be moved but will remain in the previously selected zone until they are scanned again by the handheld or an RFID reader elsewhere.

You are now ready to scan tags. To do so you must go to the Main tab. Scanning is blocked while on the Setup tab.

Attenuation: - The default setting is 22. If the scanner is too sensitive, set this number higher. If it is not sensitive enough, set this number lower. Remember that the scanner reads the strongest signal and that the strongest signal may not be the tag you are attempting to scan. That is why the attenuation is set so high. The desire is to limit the sensitivity of the scanner so that the tag that is held within one to 2 inches is the tag that is scanned.

Main

The Main tab is where the scanning of tags will occur. When a tag is scanned, if the tag is in the card holder database and has been assigned to a card holder, the photo will be displayed along with the full name (Last name, First name) and the DB ID field specified in the RTU.



Tag Holder's Photo: This is the image on the badge for this tag holder. This image is sent to the Handheld by the Server.

Tag Holder's Name: This is the name of the tag holder presented in Last name, First name form.

DB ID field: This is the identifier for the tag holder as specified in the properties of the Alien Handheld RTU, not the tag number unless that is the database field that was specified.

Number of tags read: This is the number of distinct tags read. Tags that are not found in the Intelli-Site system or tags that were not on the correct person may be re-scanned, but they do not increase this number when scanned a subsequent time.

Number of tags accepted: This is the number of tags that were accepted and moved into the zone specified on the Setup tab and displayed on the title bar.

Accept button: The Accept button is active when a successful read of a tag occurs and a tag holder is found. The Accept button can be pressed on the screen or by pulling the trigger.

Wrong Tag button: This button is active when a successful read of a tag occurs and a tag holder is found. The Wrong Tag button should only be pressed if the tag holder information presented does not match the person standing in front of the scanner. When pressed, the tag holder will not be moved to the current zone. The number of tags accepted is not incremented.